

DiVAL+

Safety & Supplies for Life

Fire & EMS Catalog



**DiVal is an
Authorized Distributor of:**





Order by Phone:
800.343.1354
7am - 5pm EST Monday - Friday.



Order by Fax:
716.874.4686
24 Hours a Day. Every Day.



Order by Web:
www.DiValSafety.com
24 Hours a Day. Every Day.



Order by E-Mail:
orders@divalsafety.com
24 Hours a Day. Every Day.



Order by Mail:
DiVal Safety Equipment, Inc.
1721 Niagara Street, Buffalo, New York 14207

Safety Outlet Store Locations

Buffalo

1701 Niagara St.
Mon-Fri 7am-5pm ET
Sat 8am-12pm ET

Philadelphia

(West Chester, PA)
220 Garfield Ave.
Mon-Fri 7am-5pm ET

Rochester

845 West Ave.
Mon-Fri 7am-5pm ET

Syracuse

6179 E. Molloy Rd.
Mon-Fri 7am-5pm ET

Table of Contents

Pages

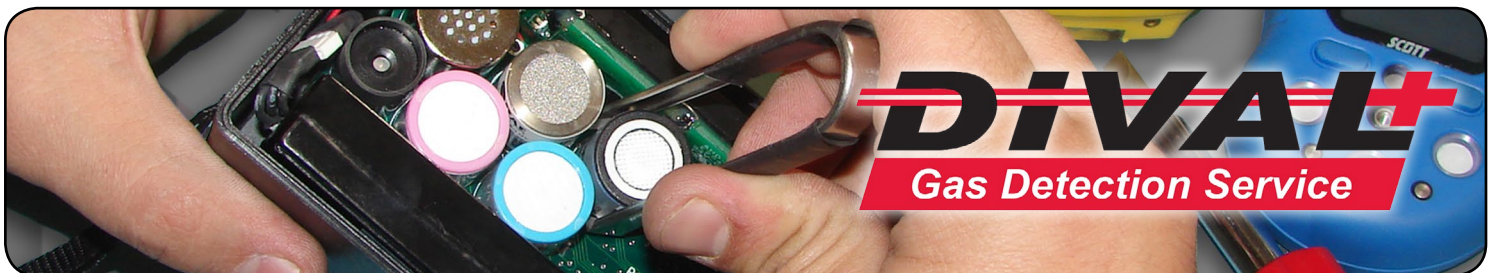
DiVal Ordering Information	2
Gas Detection Service	2
Gas Detection Equipment	3
Lighting Equipment	4-6
Safety Cans	6
Hand Protection	7-10
Protective Eyewear	10
Gear Bags	11
Firefighter Boots	12-13
Haz-Mat Suits	13-14
Firefighter Helmets	15-17
Firefighter Hoods	18
Apparel	19
Logos - DiVal MyDesign Center	19
Hearing Protection	19
Respiratory Protection	19-20
SCBA	20-21
Thermal Imaging Cameras	21
Decon Stations	22
Spill Kits	22-23
Rupture Seals	23
Rescue Equipment	24-27
Turnout Gear	28-29
Ready Racks	30-31
Rescue Tools	32

PAYMENT OPTIONS

We accept cash, check, charge, or account



Pricing in this catalog may be subject to change at any time.



- Expert Certified Technicians
- Audio and Visual Alarm Verification
- Meter Adjustment and Detection Level Verification
- Meter and Sensor Serial Number Logging and Tracking for Future Sensor Expiration Notifications
- Comprehensive Check for Meter Parts Damage
- On-Site Cal-Plus Program for Fixed Gas Detectors
- In-house and On-Site Service
- Quick Turnaround!
- We service Fixed and Portable Gas Detectors

Why Should You Call DiVal for Your Gas Detection Service Needs?

- Your meter MUST be in working order - our experts will make sure it is.
- Sensors can drift or expire - DiVal will track and notify you prior to expiration.
- A third party calibration and expert service plan helps you manage your instruments.
- Avoid long service delays that could occur by sending your instrument to the manufacturer.

We do whatever it takes to make you a satisfied customer!

Protege™ Confined Space Kit

Scott Safety Protege™ O2, LEL, CO, H2S confined space kit. Best-in-class toughness and durability. Curved design for one-hand, easy to use one-touch operation. Bright display window for easy viewing. Automatic zero-calibration and easy bump test. Glove tested for firefighters. Protege™ custom software enables custom configurations such as calibration due dates, alarm set points, backlight timer, no-push-button navigation, no unauthorized changes and log archiving in simple Excel® format. Kit includes Protege™ monitor, charger, CD with manual, software and training, calibration cup, quick reference guide, USB cable and torx tool, pump kit (pump, probe and tubing) and calibration kit (34 liter bottle of calibration gas, and regulator) in a foam lined carrying case. LEL configured with methane. Propane or pentane configuration upon request.

Item #PRO111111 \$1295.00



Protege™ Multi-Gas Monitor Kit

Scott Safety Protege™ O2, LEL, CO, H2S portable multi-gas monitor kit. Best-in-class toughness and durability. Curved design for one-hand, easy to use one-touch operation. Bright display window for easy viewing. Automatic, zero-calibration and easy bump test. Glove tested for firefighters. Protege™ custom software enables custom configurations such as calibration due dates, alarm set points, backlight timer, no-push-button navigation, no unauthorized changes and log archiving in simple Excel® format. Kit includes Protege™ monitor, charger, CD with manual, software and training, calibration cup, quick reference guide, USB cable and torx tool. LEL configured with methane. Propane or pentane configuration upon request.

Item #PRO112212 \$625.00



RAE Systems ToxiRAE 3 Single Gas Detector

The ToxiRAE 3 is a full-featured single-gas monitor that offers unequaled cost of ownership value. The ToxiRAE 3 is compatible with the AutoRAE Lite bump and calibration station. High-performance sensor for fastest possible response time. STEL, TWA, low, and high alarms can also be recorded. Logs up to 10 events, water- and dust-resistant with audible, visual, and vibration alarm. The detector is warranted for 2 years and maintenance free with replaceable battery. Rugged steel housing for harsh environments. Fastest instrument response time on the market for better protection, worker safety, and productivity, putting workers back to work quickly. Compact, low-cost bump and calibration station provides the bump capability where it is needed.

Item #G010101000 CO 0-500ppm \$219.00
Item #G010102000 HS2 0-100ppm \$219.00



GasAlertClip Extreme CO Detector

GasAlertClip Extreme single gas Carbon Monoxide, CO, detector. 2 year continuous maintenance free protection. GasAlertClip Extreme requires no calibration, no sensor replacement, no battery replacement or battery charging. Provides continuous reliable protection. Kit includes detector, alligator clip, concussion-proof housing, test cap and instructions. Water resistant. Only 2.7 oz. CO alarm set point, low-35ppm, high-200ppm.

Item #GA24XTM \$215.00



PolyTac® Tactical Light Helmet Lighting Kit

The Streamlight Helmet Mount, used in conjunction with the PolyTac®, offers a hands-free lighting solution. C4® LED technology, impervious to shock with a 50,000 hour lifetime. IPX7 waterproof to 1 meter for 30 minutes; 3M impact resistance tested. Kit includes PolyTac® flashlight with CR123A lithium batteries, steel helmet mount, and rubber helmet strap. Meets requirements of NFPA 1971-8.6 (2007).



- Item #88854** PolyTac® Helmet Kit **\$59.90**
- Item #68055** Steel Helmet Mount **\$16.90**
- Item #99075** Rubber Helmet Strap **\$3.90**

PolyTac 90® Right Angle Light

Versatile right angle compact tactical flashlight can clip onto turn-out gear, ACH or onto an elastic head strap for use as a headlamp. It's super bright, can be operated easily with gloves and is encased in a virtually indestructible nylon polymer housing. High impact super tough nylon polymer for exceptional durability and a sure grip. Glass lens, O-ring sealed. C4® LED technology, is impervious to shock, and has a 50,000 hour lifetime. Head mounted push-button switch provides one-handed momentary or constant "on" operation. Fast double click from "off" to activate Strobe mode, fast triple click from "off" to activate Low mode. Fully rotatable/reversible/removable clip to allow a variety of mounting positions. LED Solid State Power Regulator provides maximum light output throughout battery life. Waterproof up to 1 meter for 30 minutes. Gear Keeper tether feature spectra nylon line with 36" extension, 6 ounce retraction force. Two 3V CR123A lithium batteries included. Meets requirements of NFPA 1971-8.6 (2007).



- Item #88834** PolyTac 90® **\$49.75**
- Item #88832** PolyTac 90® w/ Gear Keeper® **\$56.50**

Knucklehead® Spot Flashlight

C4® LED light source offers a 50,000 hour lifetime. Unbreakable polycarbonate lens with silicone anti-scratch coating is assembled in a heavy-duty bezel. Sonic welded push-button switch designed for extremely long life. A rubber dome push-button actuator provides easy operation even when wearing gloves. Features a full 360° rotating head with 210° of articulation. IPX4 rated for water-resistant operation, all openings are O-ring sealed. Two meter impact resistance tested and removable magnet with 135 lb. pull strength clip. Spring loaded clip attaches to turn-out gear for convenient hands-free lighting. Industrial rechargeable nickel-cadmium 4.8 volt, 1.8 amp hour, 4 cell sub-C battery can be recharged up to 1,000 times. Knucklehead rack meets requirements for NFPA 1901-14.1.11.2(2003) mounted in any position. Class I, Division 2, Groups A,B,C,D; Class II, Division 2, Groups F,G; Class III, Temp Code: T4/T3C. Rechargeable or alkaline battery model.



- Item #90757** Recharge. Flashlight w/Holder **\$151.50**
- Item #90744** Alkaline Battery Model **\$81.50**



9430 Remote Area Lighting System

Pelican™ 9430 Remote Area Lighting System provides up to 15 hours of burntime in low mode with 3000 lumens of brightness in high mode. Maintenance free LED Array with life expectancy of 50,000 hours. Fully extendable mast with 360° rotating head. It also has a Low Battery Warning System, a waterproof rubber activation switch, and a mast extension lock.

- Item #9430YW** Yellow **\$785.00**
- Item #9430BK** Black **\$785.00**
- Item #9430TP** Tripod for #9430 **\$92.75**
- Item #9437B** Extension Cord **\$55.00**



Rechargeable Portable Scene Light w/ Shoulder Strap

Brings 3,600 lumens to your work area. With it's narrow footprint and 72 inch extension pole this light goes almost anywhere, from wide open places, to tight confined spaces. Cord is built into the pole avoiding snags during deployment. Full extension to 72 inches with the stabilization legs fully deployed and locked in less than 30 seconds. Six C4® LEDs and wide pattern reflectors produce a uniform flood pattern with two selectable beam widths and three light output intensities; high for a super bright flood beam, medium for an intense beam and longer run time, and low for when a less intense beam is ideal and for an even longer run time. Toggle switch allows operation from internal battery or continuous operation. High-impact thermoplastic housing. Weatherproof construction; O-Ring sealed, unbreakable polycarbonate lens with scratch-resistant coating. 12V DC power source for unlimited run time.



- Item #45670** **\$625.00**



Helmet Lighting Kit

Kit includes: 3AA ProPolymer® HAZ-LO® with alkaline batteries, Streamlight® helmet mount, and rubber helmet strap. IP67 rated for dust-tight and waterproof up to 1 meter for 30 minutes; IPX4 rated for water spray. Order separately, helmet mount, rubber helmet strap and 4AA ProPolymer Lux Flashlight. (UL Classified Class I, Division 1, Groups A,B,C,D; Class II, Division 1, Groups E,F,G; Class III; Exia; Temperature Code T4.) Safety ratings listed are for the 3AA ProPolymer HAZ-LO only.

- Item #68270** Helmet Lighting Kit **\$51.75**
- Item #68244** 4AA ProPolymer® Div 2 Flashlight **\$41.00**
- Item #68055** Steel Helmet Mount **\$16.90**
- Item #99075** Rubber Helmet Strap **\$3.90**
- Item #72024** Lanyard **\$2.65**

Survivor® LED Right Angle Flashlight w/ Charger & Holder

The redesigned Survivor features a low-profile bezel that doesn't interfere with gear and equipment. The light now comes with two optional Smoke Cutter® plugs that allow you to customize the beam to your preference without changing the light's output. Features C4® LED technology with four lighting modes. High power option for a super-bright beam that pierces through smoke. 41,000 candela, 175 lumens, and 405m beam distance. Runs for 3.5 hours. Low power option for bright light and longer run time. 14,000 candela, 60 lumens, and 237m beam distance. Runs for 13 hours. Flash for signaling runs 8 hours. Moonlight mode provides low-level lighting for battery conservation and runs 20 days. Deep-dish parabolic reflector produces narrow beam ideal for smoke-cutting applications. Spring loaded belt/harness clip. High-impact super-tough nylon construction offers exceptional durability; O-ring sealed, unbreakable polycarbonate lens with silicone anti-scratch coating is assembled in a heavy-duty bezel. IPX4 water-resistant; 2 meter impact resistance tested. Safety Ratings: Class I and II, Division 1, Groups CDEFG, Class III, T-Code: T4; Class I, Division 2, Groups ABCD, T-Code: T4. Charger meets requirements of NFPA 1901-14.1.11.2 (2003) mounted in any position.

- Item #90503** **\$112.75**
Recharge. Flashlight w/ Holder
- Item #90540** **\$62.50**
Alkaline Battery Flashlight



E-Flood® LiteBox® HL™ Flashlight w/ Shoulder Strap & Mounting Rack

This super bright, 3,600 lumen lantern is able to flood an area with light. Choose from three levels of lighting each with two flood levels for outdoor and indoor use. 12V sealed lead acid battery rechargeable up to 500 times using charging rack. Red and green LEDs provide charge status feedback. Rack meets NFPA 1901-14.1.11.2(2003) requirements. Unbreakable polycarbonate lens with scratch-resistant coating. O-ring sealed. E-Flood® LiteBox® HL™ lantern. 120V AC/12V DC, shoulder strap and mounting rack.



- Item #45661** **\$310.00**

E-Spot® FireBox® Rechargeable Lantern, Standard 120V

Three C4® LEDs spotlight an area with focused bright light so you can search or make an inspection from a distance. It's swivel-head makes the portable/ rechargeable E-Spot® great for inspecting places like high bays and ceilings. Features dual rear LEDs and 3 shock proof C4® LEDs. Has a 50,000 hour lifetime. Jumper selectable high or low settings allow selection of more light output or more runtime. High-impact ABS thermoplastic housing. Rubberized impact bumper, lens ring and cushioned-grip handle. Toggle switch facilitates use with gloves. Standard system-international safety orange, includes shoulder strap, AC/DC chargers and mounting rack. Rack meets requirements of NFPA 1901-14.1.11.2 (2003) mounted in any position. 540 lumens, 7 hours run time on high.



- Item #45861** **\$188.00**

Streamlight Fire Vulcan® LED Flashlight, AC/DC

The brightest and the lightest rechargeable LED lantern in its class. It weighs just 1.85 lbs and delivers 80,000 candela peak beam intensity. C4® technology produces an ultra bright beam. Life-saving bright blue tail lights ensure you can be seen from any direction, even in thick smoke. High impact ABS thermoplastic housing with rubberized cushioned-grip handle. Two lightweight lithium-ion nanotechnology cells. Push and hold momentary toggle switch to access 8 modes of operation. Standard system; includes quick release buckle strap, charging rack and both AC and DC chargers. 3 hours run time on high. Class I Division 2 Groups A, B, C, D, Temperature T4A; Class II Division 2 Groups F, G, Class III, Temperature T-54°C (T6) Rack meets requirements of NFPA 1901-14.1.11.2 (2003) mounted in any position.



- Item #44450** **\$172.50**



3715 LED Right Angle Standard Flashlight

Compact, rugged and lightweight, the 3715 LED light contains the latest technology and Pelican®'s legendary build quality and lifetime guarantee of excellence. Features secure clip for hands free use. Four mode battery level indicating button with tethered battery door that allows for quick battery change. Locking wheel securely holds four double A batteries. Four mode push button body switch featuring downcast LED's for illuminating your path, the new 3715 LED light also features 174 lumens (high) and 95 lumens (low) and signaling mode.



Item #3715PL \$114.95



3765 LED Right Angle Rechargeable Flashlight

Compact, rugged and lightweight, the 3765 LED light contains the latest technology, Pelican®'s legendary build quality and lifetime guarantee of excellence. Features 4 mode LED technology (high, low, downcast, signaling). Rechargeable NiMH pack included, but the 3765 LED light also operates on four standard double A alkaline batteries. Push button multi-functional switch - 100%, 50% and flashing. Battery level indicating switch. NFPA compliant 1901 and safety approved (Class 1 Division 2 with NiMH battery pack).



Item #3765YLW \$156.90
Item #3765BLK \$156.90



ProGear® 9420 LED Work Light Kit

Keeps you moving at the speed of light. Equipped with two LED's (1000 lumens of light and 2 hours of run time), plus a 5 foot high mast deploys easily in seconds and illuminates your entire work area. With the 9420 you will get the job done without the hassle of power cords. The 9420XL LED work light kit includes a blow-molded case, lithium-ion batteries, DC vehicle charger, AC main charger with transformer, charging station, and an easy carry shoulder strap.



Item #9420XL \$270.05



NightStick® Dual Color Constant & Alternating Safety Light/Flashlight

NightStick® Safety Light combines a full-size flashlight and a flood/flushing safety light in an all LED compact light-weight package. Two body mounted switches control the lighting functions. Tight-beam, long-throw 150 lumens flashlight in either momentary or constant-on mode. You can also control the safety light array with options for constant-on or flashing alternating (depending on model) operation. Features engineered polymer housing with non-slip grip. Comfortable oval shape and soft touch finish. Dual body switches. Water, impact and chemical resistant. Powered by four premium AA alkaline batteries (included).

Item #NSP1170 Blue/Red **\$37.50**
Item #NSP1176 White/Amber **\$37.50**
Item #NSP1178 White/Blue **\$37.50**



Type I Safety Cans

Compliant Type I safety cans are designed with a single spout for filling and pouring. The self-closing, leak proof lid provides security from spills and leaks. Cans up to one gallon feature a trigger release handle while larger capacities have a swinging handle to greatly ease carrying heavier loads. Unique counterbalance, ergonomic design with full-fisted grip handle offers gravity-assisted pouring. All models are equipped with an FM-tested dual-density flame arrester, which reliably dissipates heat to stop flashback ignition. To protect against rupture or explosion, positive pressure relief mechanism automatically vents between 3 and 5 psi. Heavy-duty, high grade coated steel construction features special reinforcing ribs to strengthen sidewalls for extra "bumper guard" protection. Finished in a tough powder coat paint, Justrite cans resist chemicals and stand up to heavy abuse. They meet OSHA and NFPA requirements, are certified by FM, UL, ULC, and carry the exclusive Justrite Ten-Year Warranty. 5 gallon safety cans available in a variety of colors that are suitable for the storage of flammable liquids.

Item #10101	1 quart	Red	(For Gasoline)	\$35.40
Item #10301	1 gallon	Red	(For Gasoline)	\$34.35
Item #10501	2 gallon	Red	(For Gasoline)	\$35.40
Item #10555	2-1/2 gallon	Red	(For Gasoline)	\$37.45
Item #10801	5 gallon	Red	(For Gasoline)	\$39.55
Item #10810	5 gallon	Blue	(For Kerosene)	\$40.60
Item #10811	5 gallon	Yellow	(For Diesel Fuel)	\$40.60
Item #10812	5 gallon	Green	(For Oil)	\$40.60



Polypropylene Pour Funnel JUSTRITE®

Justrite durable polypropylene pour funnel for Type 1 cans. Easy-to-fill and Easy-to-pour allows for leak-free pouring into small openings.

Item #11200 11-1/4" Length **\$6.00**



G-Grip™ Palm Gloves

Features:

- Neoprene cuff and knuckles
- Velcro® closure
- AirMesh™ breathable back
- G-Grip™ anti-slip palm patches for secure grip
- Reflective trim
- Rhino-Tex™ synthetic leather palm
- Hi-Viz Lime

#2950HVLOGO(size)
LG-2XL **\$16.55**



Silicone Grip Palm Work Gloves

Features:

- Neoprene cuff and knuckles
- Velcro® closure
- AirMesh™ breathable back
- Caiman® raised pull patch and pulse protector
- Caiman® silicon grip palm
- Rhino-Tex™ synthetic leather palm
- Black and Red

#2951LOGO(size)
LG-2XL **\$16.55**



Rhino-Tex™ Palm Gloves

Features:

- Durable and breathable lightweight back to maximize comfort
- Abrasion resistant
- Rhino-Tex™ palm
- G-Grip™ anti-slip palm patches for secure grip
- Neoprene knuckle guards add support and protection

#1950LOGO(size)
MD-2XL **\$14.75**



Goatskin Palm Gloves

Features:

- Slip-on cuff
- Goat leather palm and fingers
- Smooth and flexible feel
- Durable and breathable lightweight back to maximize comfort

#1957LOGO(size)
MD-XL **\$13.50**



Chrome Series® 4026 Gloves

Features superior back of hand impact protection that utilizes the advanced design to dissipate forceful blows over a large area. The internal palm layer of SuperFabric® provides ISEA and CE level 5 cut resistance and maintains the highest level of protection, while the exterior layer of PVC dotted synthetic leather provides reliable grip in dry and light oil applications, while increasing abrasion resistance. Double stitched core-spun thread adds extra durability and longevity. Machine washable.

#4026(size) SM-XL **\$38.00**
Available at additional cost: 2XL, 3XL



GGT5® HexArmor Mud Grip® 4021x Gloves

Made with SuperFabric® brand material, providing you with the highest cut resistance on the market. Other features include puncture protection, enhanced impact protection and a special HexArmor Mud Grip®. This glove exceeds ISEA and CE level 5 cut resistance in noted areas and provides puncture protection from wickers, burrs, and cable wire. A HexArmor Mud Grip® synthetic leather palm and thumb area with PVC dots work well with light to medium oil based muds, giving you a sure grip in hazardous environments. Machine washable.

#4021(size) SM-XL **\$44.30**



#HVO5555

#HVO1555

Insulated Leather Palm Safety Gloves

West Chester premium grain pigskin leather palm gloves with high-visibility safety orange back. 100 gram 3M™ Thinsulate™ lining provides excellent protection when working in colder conditions. Reflective material across cuff and knuckle provides excellent visibility in darkness and low-light conditions. Rubberized 2-1/2" safety cuff. Reflective tape meets ANSI/ISEA 107-1999 Level 2.

#HVO5555(size) **\$6.55**
Safety Cuff, MD-XL

#HVO1555(size) **\$6.75**
Knit wrist, MD-XL



Pro-Tech 8 Structural Fire Fighting Gloves

Fusion structural gloves are extremely flexible with light weight construction while maintaining safety and protection. Glove back side features unique 8-layer flexible knuckle guard system which reinforces thermal protection and cut/puncture resistance at the vulnerable knuckle compression point; a well-known firefighting hazard. Unique stitching of the outer palm layer prevents bunching up of material and promotes the most efficient grip of any NFPA compliant structural glove. Gathered stitching is used around the entire wrist for a secure fit and prevents debris from entering the glove. A leather hang-up loop is provided in the glove for fast, easy drying and storage. Provides blood borne pathogen protection. Overall more breathable and quicker drying than full leather structural gloves. Specifically for use with turnout gear sleeves that have thumb hole wristlets. Titan gloves feature an inner liner of 100% knitted Nomex® and the Titan is also fully lined with 100% Kevlar®, which provides much greater cut resistance than leather alone. Titan-K gloves are made from kangaroo leather. Available with 2-½" gauntlet short cuff or 4" gauntlet long cuff. Certified to NFPA 1971: 2013 standards.

- | | | |
|---|---|--|
| Item #PT8SC(size) \$58.95
Fusion, Short Cuff Gloves, 2XS - 3XL | Item #PT8TNSC(size) \$76.95
Titan, Short Cuff Gloves, XS - 3XL | Item #PT8TNKSC(size) \$97.95
Titan-K, Short Cuff Gloves, XS - 3XL |
| Item #PT8LC(size) \$62.95
Fusion, Long Cuff Gloves, SM - 3XL | Item #PT8NLSC(size) \$79.95
Titan, Long Cuff Gloves, XS - 3XL | Item #PT8TNKLC(size) \$102.95
Titan-K, Long Cuff Gloves, XS - 3XL |

Pro-Tech 8 Evolution Structural Fire Fighting Gloves

Features Pro-Tech 8's exclusive multi-layer knuckle guard system providing superior cut resistance and radiant heat protection. Lined with proprietary steam blocker to protect the backside of hand and fingers. Highly durable rubberized Kevlar® base layer along with 100% Kevlar® dimpled inner liner for easy donning and doffing. Palm layers stitched down with high burst Kevlar® thread throughout for powerful grip. Flexible finger sidewalls of Kevlar® and Nomex® to maximize dexterity. Pro-Tech 8 Evolution gloves provide a certified FR breathable, waterproof and blood-borne pathogen barrier. Certified to NFPA 1971: 2013 standards.



- | | |
|---|--|
| Item #PT8EVOSC(size) \$82.95
Evolution, Short Cuff Gloves, 2XS - 3XL | Item #PT8EVOLC(size) \$87.95
Evolution, Long Cuff Gloves, 2XS - 3XL |
|---|--|

PRO-TECH 8



Xtrication® Fire & Rescue Gloves

Shelby® 2500 Xtrication® fire and rescue gloves. A pre-curved, form fitting extrication glove designed by auto extrication specialists. Glove body is made entirely of "air-textured," high tenacity genuine DuPont Cordura®. Features vented protective rubber guards welded to the backs of all fingers, reflective trim, terry brow wipe and elastic "snuggler" at wrist to repel debris. Elastic at wrist crease ensures proper fit. Multiple layers in the thumb crotch area provide "high wear" protection. Glove body length interfaces with other protective clothing.

- | | |
|--|---|
| Item #2500(size) \$49.55
Xtrication® Gloves, Hi-Viz Lime, SM-XL | Item #2511(size) \$57.50
Xtrication® Gloves, Blue, SM-XL |
|--|---|



Pro-Tech 8 BOSS Series Gloves

The Pro-Tech 8 BOSS Series gloves are your Best Offensive Safety Solution for advanced extrication, technical rescue, incident clean-up, and any utility application on the job. The most advanced and innovative multi-purpose glove on the market today. Gloves feature level 3 cut resistant silicone coated Kevlar® palm and finger sidewall protection while maintaining lightweight flexibility and comfort. 100% Kevlar® thread for extreme durability. Reinforced carabiner hole to hang or clip gloves.

Pro-Tech 8 ORIGINAL BOSS Gloves

Glove Features: Rubberized thermo-plastic reinforced fingertips and palm side for enhanced grip. Cut and puncture resistant.

Item #PT8BRG(size) SM-XL **\$25.95**
 Available at additional cost 2XL-3XL

Pro-Tech 8 BOSS Litex® Gloves

Glove Features: Litex®/ Rubberized Kevlar® palm and fingertips for enhanced protection against oil, grease and acid. Reinforced areas on fingertips and palm have increased thermal protection patches for extreme heat (700°F/370°C).

Item #PT8BLO(size) SM-3XL **\$29.95**

Pro-Tech 8 BOSS Extreme Gloves

Glove Features: Rubberized silicone reinforcements on fingertips and palm can withstand extreme heat (1000°F/538°C). Coated palm and fingertips for enhanced grip. Cut and puncture resistant.

Item #PT8BHH(size) SM-3XL **\$29.95**

Pro-Tech 8 BOSS Tactical Gloves

Glove Features: Rubberized silicone reinforcements for enhanced dexterity and grip. Thumb and index finger includes S-Force™ design for increased puncture resistance. S-Force™ allows for use of touch screen devices without the removal of gloves, for increased safety.

Item #PT8BPG(size) SM-3XL **\$29.95**

Pro-Tech 8 X+R Multi-Purpose Gloves

Breathable polyurethane barrier provides resistance against blood borne pathogens and keeps hands dry. All outer layer materials are flame resistant. 100% Kevlar® high burst thread throughout. Durable Kevlar® and water resistant leather palm. 50% Kevlar®/ 50% cotton blend inner liner that provides additional cut resistance and extra comfort. Digitized leather fingertips and ribbed knuckles for flexibility. Heat resistant hook and loop wrist closure with reinforced carabiner hole. SFI 3.3/5 Certified. NASCAR approved extrication gloves. Meets ANSI Standards for Cut Level 3 protection.

Item #PT8XR(size) SM-3XL **\$49.95**

Pro-Tech 8 Industrial Collapse Extrication Gloves

This is the closest thing to wearing steel! Designed for severe industrial collapse, urban search and rescue and extrication-- our new ICE Glove features ultimate cut protection while maintaining maximum dexterity, grip, flexibility and comfort. The ICE features an anti-vibration Kevlar® coated 8 mm padded palm. The glove outer body is entirely knitted 100% Kevlar® with a silicone coated palm side for enhanced cut resistance. Reinforced Kevlar® coated thumb crotch. Kevlar® reinforced finger backs and sides. Silicone fingertips for enhanced grip and protection. Fully lined with cut resistant knitted 100% Kevlar®. Highly flexible ribbed knuckle-guard protection system. Meets ANSI Standards for Cut Level 5 Protection.

Item #PT8ICE(size) SM-3XL **\$34.95**

Pro-Tech 8 X-Plus Extrication Gloves

Multi-layer design provides exceptional cut, puncture and heat resistance while all outer layer materials are flame resistant- primarily Modacrylic and rubberized Kevlar®. Durable rubberized Kevlar® and water resistant leather palm. 50% Kevlar®/ 50% cotton blend inner liner provides additional cut resistance. Breathable polyurethane barrier provides resistance against blood borne pathogens and keeps hands dry. All inner liners sewn in and bonded at the finger tips. Rubberized Kevlar® with an additional layer of neoprene and silicone carbide at the knuckle guard. Ribbed knuckles on finger backsides. 100% Kevlar® high burst thread throughout. Heat resistant hook and loop wrist closure.

Item #PT8XTR(size) Red SM-3XL **\$42.50**

Item #PT8XT(size) Yellow SM-3XL **\$42.50**

Nitri-Care® PF Disp. Gloves

Nitri-Care® comes in a textured finished to ensure excellent grip and handling. Great for medical, EMT and food packaging applications. Class I medical device.



- Nitrile Gloves
- Mil: 4mm
- Powder Free
- 9.5" Standard Length
- Rolled Cuff
- Blue
- 100 gloves/box
- 10 boxes/case

Item #3005PF(size)

Sizes XS-XL

\$11.50/BX

N-DEX® PF Medical Grade Disp. Gloves

The SHOWA® N-DEX® 6005PF is a 100% smooth nitrile, non-latex medical grade glove. Powder-free, Class I medical device.



- Nitrile Gloves
- Mil: 4mm
- Powder Free
- 9.5" Standard Length
- Rolled Cuff
- Light Blue
- 100 gloves/box
- 20 boxes/case

Item #6005PF(size)

Sizes XS-XL

\$14.20/BX

MidKnight® PF Disp. Nitrile Exam Gloves

Microflex® MidKnight® powder-free medical grade nitrile exam gloves. Excellent choice for wet environments. Fully textured for firm and consistent grip. Not made from natural rubber latex.



- Nitrile Gloves
- 4.7 mil Thickness
- Powder Free
- Beaded Cuff
- 9.6" Length
- Black
- 100 gloves/box
- 10 boxes/case

Item #MK296(size)

Sizes XS-XXL

\$16.65/BX

SafeGrip® PF Disp. Latex Exam Gloves

3 times thicker than standard latex exam gloves with the highest level of protection and durability for heavy-duty or high-risk environments.



- Latex Gloves
- 11 mil Thick. (Palm)
- Powder Free
- Beaded Cuff
- 11.6" Length
- Blue
- 50 gloves/box
- 10 boxes/case

Item #SG375(size)

Sizes SM-XL

\$16.90/BX

Diamond Grip™ PF Disp. Latex Exam Gloves

Diamond Grip™ gloves provide strength and durability, especially in the fingertips where protection is critical. Ideal for rugged tasks in mid- to heavy-duty environments.



- Latex Gloves
- 6.3 mil Thickness
- Powder Free
- Beaded Cuff
- 9.6" Length
- White
- 100 gloves/box
- 10 boxes/case

MF300(size)

Sizes XS-XL

\$15.45/BX

Supreno® SE PF Disp. Nitrile Exam Gloves

Supreno® SE gloves provide the durability and industry leading protection needed for heavy-duty applications. Not made from natural rubber latex. Textured fingers.



- Nitrile Gloves
- 4.3 mil Thick. (Palm)
- Powder Free
- Beaded Cuff
- 9.6" Length
- Blue
- 100 gloves/box
- 10 boxes/case

Item #SU690(size)

Sizes SM-XL

\$12.10/BX



V50 CALICO* Safety Glasses

Lightweight, wrap-around design provides added comfort and protection from dust and debris. Cushioned brow bar allows for additional comfort and ventilation. Impact resistant polycarbonate anti-fog lens provides 99.9% UV protection. Interchangeable temples to head strap for a more secure, comfortable fit. Meets EN166 7.3.1, CSA and ANSI Standards.

Item #25672 \$10.90

Clear AF Lens

Item #25675 \$11.25

Smoke AF Lens

Item #36692KC \$11.25

1/2 Shade AF Lens



Di-Vision Sport Lens Safety Glasses

Lightweight, rimless design provides all day user comfort. Flexible rubber tip temples provide a secure fit without uncomfortable pressure points. The scratch resistant 100% polycarbonate lens blocks 99.9% harmful UV-rays. Meets or exceeds ANSI Z87.1 standards for high impact requirements. Sold by the pair. 12 pair per box. 144 pair per case.

#A1113CHC Clear Lens \$2.25

#A1113CHCAF Clear, AF Lens \$2.80

#A1113GHC Gray Lens \$2.60

#A1113GHCAF Gray, AF Lens \$3.05

#A1113AHC Amber Lens \$2.60

#A1113IOHC Mirrored Lens \$2.80



Di-Vision Wrap-Around Safety Glasses

Di-Vision sleek wrap-around economical safety glasses. Lightweight, rimless design provides all day user comfort. General purposes for indoor applications that require impact protection. The scratch resistant, 100% polycarbonate lens offers 99% protection from harmful UV-A and UV-B rays. Exceeds ANSI Z87.1-2003 high velocity impact standards.

Item #A1112CHC \$1.80

Clear Lens

Item #A1112GHC \$1.95

Gray Lens

Item #A1112AHC \$1.95

Amber Lens



Ergodyne Arsenal® Gear Bags

Ergodyne Arsenal® gear bags are not only water repellent, but also resist abrasions, tears, scuffs, and punctures. Reinforced with 1000 denier nylon and double-coated with polyurethane, the main compartment dimensions are 16"W x 21"L x 15"H with three additional large pockets for maximum space efficiency.

- Item #GB5005NC** Standard Bag **\$81.60**
- Item #13005ERG** Standard Bag w/ Logo **\$88.10**
- Item #13205ERG** Wheeled Bag w/ Logo **\$117.10**

Ergodyne Arsenal® 5060 Step-In Combo Gear Bag

Ergodyne Arsenal® 5060 Step-In Combo Fire and Rescue Gear Bag. Store boots at the ready while keeping other items zipped up. 1000D nylon, double-coated polyurethane construction. Removable adjustable shoulder strap and strap grabber. Heavy duty #10 zippers. Maltese cross on front side. 15" x 14" x 15" main hold. Two 15" x 8" x 15" end pockets. 111 liter capacity.



- Item #13060** **\$71.20**



Large Gear Bags

Large gear bags with three compartments and two outside zip pockets. Vented back panel. Huge 4.5 cubic feet of interior storage. Main compartment: 18" x 17" x 16". Overall dimensions: 29" x 17" x 16". #OK3000 and #6565001 also have Maltese Cross logo and a shoulder strap with "Fire Fighter" woven in reflective trim. #6565001 has durable in-line skate wheels and bottom skid plate as well.

- Item #OK3025** Standard Bag **\$63.90**
- Item #OK3000** Standard Bag w/ Logo **\$66.85**
- Item #6565001** Wheeled Bag w/ Logo **\$78.00**

Ergodyne Arsenal® 5030 Water Resistant Duffel Bags

The Ergodyne Arsenal® 5030 black duffel bag is water and weather resistant to keep up with any environment. Made of water resistant tarpaulin material with 1000D polyester mesh and heavy-duty YKK zippers with flap for further protection. Shoulder straps configured to carry as a duffel or backpack, consisting of four compression straps and two haul handles. An interior mesh pocket under flap and open design provide maximum capacity, along with ID and document pockets on the bag.

- Item #13030ERG** **\$131.90**
24" x 15" x 15" (4,395 cubic in.)
- Item #13032ERG** **\$151.90**
28" x 17" x 17" (5,495 cubic in.)
- Item #13034ERG** **\$171.90**
32" x 19" x 19" (9,460 cubic in.)

Ergodyne Arsenal® 5000 Fire and Rescue Gear Bag

Ergodyne Arsenal® 5000 Fire and Rescue Gear Bag. Large size and single compartment for straightforward gear storage and transport. 1000D nylon, double-coated polyurethane. Removable adjustable shoulder strap and strap grabber. Maltese cross on front side. 13" x 28" x 13" main hold. 10" x 1" x 10" outside front pocket. 78 liters.



- Item #13000ERG** **\$58.50**

DiVal+ MyDesign Center

Our MyDesign Center Offers Custom Logo Printing, Silk Screen & Embroidery!

Promote your local Fire Department with Custom Designs!





Fire Hero® Xtreme Leather Firefighting Boots

11" boot features HAIX® protective extra wide carbon toe cap with a specially developed rubber toe cap providing a comfortable fit as well as high quality protection. Protective sole also provides protection from sharp objects. MSL system for shock absorption and insulation, boots feature HAIX® climate system as well as SunReflect which both reduce heating and moisture and pump fresh air into the shoe with every step. Waterproof leather uppers. HAIX® ankle flex system stabilizes the foot inside the boot, while HAIX® safety protection zones cover different areas of the foot which are usually prone to injury. Optimal performance in water, ice and snow. HAIX® Secura Liner® will never pull out of the boot or wrinkle. Nameplate found on boots for identification. Tested and certified by Underwriters Laboratories to meet US standards as well as Canadian standard CAN/CSA Z195. Meets or exceeds NFPA 1971-2013 and NFPA 1992-2012 and ASTM F 2413-2011 standards.

- Item #507101(size#)** Men's Size 5-16, Narrow, Medium & Wide **\$345.00**
- Item #507102(size#)** Women's Size 5-12, Narrow, Medium & Wide **\$345.00**



Fire Hunter® USA Leather Firefighting Boots

11" boot features HAIX® protective extra wide steel toe cap with a specially developed rubber toe cap providing a comfortable fit as well as high quality protection. MSL system for shock absorption and insulation, boots feature HAIX® climate system as well as SunReflect which both reduce heating and moisture and pump fresh air into the shoe with every step. CrossTech fabrics provide liquid penetration resistance as well as waterproofness and breathability. Waterproof leather uppers. HAIX® Secura Liner® will never pull out of the boot or wrinkle. Tested and certified by Underwriters Laboratories to meet US standards as well as Canadian standard CAN/CSA Z195. Meets or exceeds NFPA 1971-2013, NFPA 1992-2012 and ASTM F 2413-2011 standards.

- Item #502004(size#)** Men's Size 5-16, Narrow, Medium & Wide **\$275.00**
- Item #502005(size#)** Women's Size 5-12, Narrow, Medium & Wide **\$275.00**



Fire Hunter® Xtreme Leather Firefighting Boots

14" boot features HAIX® protective extra wide steel toe cap with a specially developed rubber toe cap providing a comfortable fit as well as high quality protection. Protective sole also provides protection from sharp objects. MSL system for shock absorption and insulation, boots feature HAIX® climate system as well as SunReflect which both reduce heating and moisture and pump fresh air into the shoe with every step. Waterproof leather uppers. HAIX® ankle flex system stabilizes the foot inside the boot. HAIX® Secura Liner® will never pull out of the boot or wrinkle. Tested and certified by Underwriters Laboratories to meet US standards as well as Canadian standard CAN/CSA Z195. Meets or exceeds NFPA 1971-2013 and NFPA 1992-2012 and ASTM F 2413-2011 standards.

- Item #501605(size#)** Men's Size 5-16, Narrow, Medium & Wide **\$319.00**
- Item #501606(size#)** Women's Size 5-12, Narrow, Medium & Wide **\$319.00**



Fire Flash® Xtreme Leather Firefighting Boots

10" boot features HAIX® protective extra wide steel toe cap with a specially developed rubber toe cap providing a comfortable fit as well as high quality protection. Protective sole also provides protection from sharp objects. MSL system for shock absorption and insulation, boots feature HAIX® climate system as well as SunReflect which both reduce heating and moisture and pump fresh air into the shoe with every step. Waterproof leather uppers. HAIX® Secura Liner® will never pull out of the boot or wrinkle. HAIX® Lacing System allows optimal adjustment to the foot through the laces, but a zipper is still present for easy entry and exit. Tested and certified by Underwriters Laboratories to meet US standards as well as Canadian standard CAN/CSA Z195. Quad certified, NFPA 1971-2013, NFPA 1992-2012, NFPA 1951-2013, NFPA 1977-2011 and ASTM F 2413-2011 standards.

- Item #506005(size#)** Men's Size 5-16, Narrow, Medium & Wide **\$365.00**
- Item #506006(size#)** Women's Size 5-12, Narrow, Medium & Wide **\$365.00**



Airpower® R2 Leather Rescue Boots

8" boot features HAIX® protective extra wide steel toe cap providing a comfortable fit as well as high quality protection. HAIX® Arch Support System keeps foot in the best position for optimal foot health. Boots feature HAIX® climate system as well as SunReflect which both reduce heating and moisture and pump fresh air into the shoe with every step. Waterproof leather uppers. HAIX® Secura Liner® will never pull out of the boot or wrinkle. Tested and certified by Underwriters Laboratories to meet US standards as well as Canadian standard CAN/CSA Z195. Meets or exceeds NFPA 1999-2013 and ASTM F 2413-2011 standards.

- Item #605109(size#)** Men's Size 4.5-15, Medium, Wide & X-Wide **\$245.00**
- Item #605110(size#)** Women's Size 5-10, Medium, Wide & X-Wide **\$245.00**



Black Diamond® X-2 Leather Firefighter Boots

14" Boots feature Comfort Fit Plus technology with Ortholite® for comfort, anti-fungal, anti-odor and shock absorption. Exclusive 3-point Heel Locking system to reduce heel slippage while increasing mobility. Heavyweight leather uppers made with FireTuff flame retardant and waterproof fabric. Strobel lining construction to ensure no liner pull out. Also featuring CrossTech® membrane, Omaha lining, and Kevlar® cut-protection lining. Padded shin guards as well as rubber toe cap and steel toe for ultimate protection. Steel midsole provides puncture protection. Features rubber comfort cup outsole with high abrasion and traction performance. Pull on system for easy on/off. Meets or exceeds ASTM standards. NFPA 1971-2007 certified. Boots can be custom fit to medium, wide and extra wide.

Item #0912(size#) 6-15 **\$299.00**



HazProof® Steel Toe Boot w/ Sure Grip Outsole

Made of special polymer material, this comfortable boot meets the protective footwear chemical permeation requirements of NFPA 1991 Standard on Vapor Protective Ensembles for Hazardous Materials Emergencies. The HazProof® boot has also been tested to Military Standard 282 and will provide protection against certain chemical warfare blister and nerve agents. Injection molded seamless construction for 100% liquid proof protection. Larger foot area is engineered to accommodate the extra bulk of an encapsulated suit, for comfortable fit. Smooth exterior surface for easy decontamination. Stretch fastener closure system allows for easy on and off while wearing gloves. Meets ASTM F 2413-05 M/I/75/C/75 (adopted from ANSI Safety Spec Z41 PT99) for steel toe impact and compression, and Electrical Hazard Protection. Steel mid-sole meets and exceeds ASTM F 2413 PR. Steel shank provides firm arch support. Blown closed cell EVA mid-sole for all day cushion comfort. Sure grip cleated outsole has excellent abrasions and slip resistance.

Item #82330(size#) 6-13 **\$82.90**



Hazmax® Kneeboots Overboot w/ Cleated Outsole

OnGuard Hazmax® Kneeboots 16" overboot with self-cleaning cleat outsole. Steel toe, shank, and midsole for complete protection. Limited flash-fire protection escape only in the event of a chemical fire. One-piece injection molded construction. Constructed of a high viscosity and PVC alloy. Non-absorbent polyester lining for easy cleaning and quick drying. Replaceable cushioned insoles. Cut off bands and kick off lug. Meets NFPA 1991, 2005 ed. certification for hazardous materials handling. Meets CSA standards for Dielectric Footwear. Steel toe complies with ASTM F2413-11 and CSA Z195.

Item #87012(size#) 6-15 **\$97.75**



#1SA

ONESuit® Level A Haz-Mat Suits



ONESuit® is engineered to meet the protection and comfort needs of those working in the most dangerous environments. Lightweight design combines superior protection and maximum user comfort. ONESuit® is reusable and decontaminable with a 15-year minimum shelf life. Features a secondary visor, internal belting system, knee reinforcements and integral booties. No overcover. Includes ONEGlove® Hazmat gloves which provide the highest available combination of physical and chemical protection.

ONESuit® Gard (#1SA) provides maximum protection against chemical and biological agents. Certified to NFPA 1991 standard with Liquefied Gas protection.

ONESuit® Flash (#1SF) was the first single-skin suit certified to protect against chemical flash fires and provides maximum protection against chemical and biological agents. Certified to NFPA 1991 with Flash Fire and Liquefied Gas protection.

Item #1SA(size) Gard, SM-XL **\$1962.70**

Item #1SF(size) Flash, SM-XL **\$2785.70**

Available at additional cost: 2XL, 3XL



#1SF

DuPont™ Tychem® TK Encapsulated Level A Suits

Tychem® TK suits have premium protection against toxic and corrosive gaseous, liquid and solid chemicals. It is the leading garment chosen by HazMat responders worldwide. Tychem® TK has extremely durable, puncture- and tear-resistant fabric. Tychem® TK provides at least 30 minutes of protection against >320 chemical challenges. All Tychem® TK encapsulated suits are TAA compliant. High-visibility lime yellow.

- Double taped seams
- Extra wide three-layer faceshield (PVC 40 mil Teflon 5 mil/PVC 20 mil)
- Gas-tight PVC zipper closure
- Double storm flaps with hood-and-loop closure
- Two Auer exhaust valves
- Expanded back
- Internal adjustment belt
- Attached internal Barrier® gloves
- Attached outer Butyl or Viton gloves
- Knee wear pads
- Attached socks
- Outer boot flaps with elastic

Item #TK554TLY(size) MD-XL Front Entry
Item #TK555TLY(size) MD-XL Rear Entry



\$916.00
\$916.00



Front Entry design allows wearer to partially don garment (maintain standby position) without assistance. Expanded back to accommodate self-contained air breathing apparatus (SCBA).



Rear Entry design keeps closure away from direct contact with frontal chemical exposure and provides ability to change air bottle on SCBA without removing the entire garment. Expanded back to accommodate self-contained air breathing apparatus (SCBA).



DuPont™ Tychem® Reflector® Encapsulated Level A Suit, Front Entry, Hi-Viz Silver

The Tychem® Reflector® suit is composed of a patented, heavy-duty aluminized fabric made of a DuPont™ NOMEX® and DuPont™ KEVLAR® blend laminated to a multi-layer barrier film. This unique combination of layers provides excellent physical strength as well as abrasion protection.

- "Single Skin" multi-layer construction
- Triple taped seams provide strong chemical resistance
- Three layer faceshield (PVC 40 mil/Teflon® 5mil/PVC 20mil)
- Gas-tight zipper front closure
- Double storm flaps with hook-and-loop VELCRO® closure
- Two exhaust valves
- Expanded back
- Front Entry
- Three layer glove system (Barrier®/Neoprene/KEVLAR® knit)
- Integrated socks and attached flaps to cover boot tops
- Provides a high level of protection against a broad range of chemicals and chemical warfare agents
- Certified to NFPA 1991, with flashfire escape and liquefied gas options
- TAA Compliant
- 1 per case

Item #RF600TSV00(size) SM-XL **\$2339.20**
 Available at additional cost: 2XL-4XL



DuPont™ ThermoPro Coveralls

DuPont™ Tychem® ThermoPro garments offer a single layer garment that provides triple hazard protection from liquid-chemical splash, flash fire, and electric arc. Tychem® ThermoPro garments are designed to combine the trusted chemical protection of Tychem® and thermal/arc protection of Nomex® into a single layer garment. Tychem® ThermoPro garments are designed to help provide industrial workers and Hazmat responders with permeation protection against a broad range of toxic industrial chemicals and chemical warfare agents and to provide escape time from flash fires and protection from electric arc. Tychem® ThermoPro fabric provides at least eight hours breakthrough protection against 20 of 21 standard ASTM F1001 chemicals and at least 30 minutes of protection for more than 180 chemical challenges including chemical warfare agents. The arc rating of Tychem® ThermoPro fabric is 15 cal/cm². This exceeds the NFPA 70E Hazard Risk Category 2 requirement.

Coveralls: Feature attached respirator-fit hood with drawstring to pull tightly around respirator. Longer zipper extends to chin for complete coverage of neck area. Storm flap covers zipper which can be secured by the wearer with rugged hook and loop material to prevent intrusion at zipper. Elastic wrists and ankles (EWA). Bright orange and gray available. Gray includes integrated boot. 2 per case.

TP198TOR(size) MD-XL EWA, Hood **\$675.00**
TP199TGY(size) SM-XL EWA, Hood, Boots **\$840.00**
 Available at additional cost: 2XL-5XL



Hazard Risk Category 2

#TP199TGY



Bullard USTM Helmet w/ 6" Eagle & Bourkes

- Traditional style fire helmet look with a matte finish
- Bourkes eyeshield
- Chemical resistant fiberglass outer shell
- 6" brass stars and stripes eagle
- Accommodates any leather front
- High heat thermoplastic inner liner
- Comfortable Sure-Lock® ratchet headband
- Balanced 6-point nylon crown straps and crown pad
- Nomex® chinstrap with Quick Release buckle and Postman's slide fastener
- Rip-Stop Nomex® ear and neck protector

**Available in Black, Red, White or Yellow*

Item #USTM6BRK(color) \$241.00



Bullard USTM Helmet w/ 4" Face Shield

- Traditional style fire helmet look with a matte finish
- Hard coated optically-correct 4" faceshield
- Certified to NFPA 1971-2013 standard
- Chemical resistant fiberglass outer shell
- 6" brass stars and stripes eagle
- Accommodates any leather front
- High heat thermoplastic inner liner
- Comfortable Sure-Lock® ratchet headband
- Balanced 6-point nylon crown straps and crown pad
- Nomex® chinstrap with Quick Release buckle and Postman's slide fastener
- Rip-Stop Nomex® ear and neck protector

**Available in Black, Red, White or Yellow*

Item #USTM6(color) \$227.00



Bullard USTM Helmet w/ Bourkes & TrakLite®

- Traditional style fire helmet look with a matte finish
- Bourkes eyeshield
- Traklite® helmet lighting system
- 8 forward-facing LED lights
- Chemical resistant fiberglass outer shell
- 6" brass stars and stripes eagle
- Accommodates any leather front
- High heat thermoplastic inner liner
- Comfortable Sure-Lock® ratchet headband
- Balanced 6-point nylon crown straps and crown pad
- Nomex® chinstrap with Quick Release buckle and Postman's slide fastener
- Rip-Stop Nomex® ear and neck protector

**Available in Black, Red, White or Yellow*

Item #USTM6BRKTL(color) \$320.00



Bullard USTM Helmet w/ ESS Goggles

- Traditional style fire helmet look with a matte finish
- ESS Inter Zone 2 goggles
- Certified to NFPA 1971-2013 standard
- Chemical resistant fiberglass outer shell
- 6" brass stars and stripes eagle
- Accommodates any leather front
- High heat thermoplastic inner liner
- Comfortable Sure-Lock® ratchet headband
- Balanced 6-point nylon crown straps and crown pad
- Nomex® chinstrap with Quick Release buckle and Postman's slide fastener
- Rip-Stop Nomex® ear and neck protector

**Available in Black, Red, White or Yellow*

Item #USTMG26(color) \$227.00



Bullard USTM Helmet w/ ESS Goggles & TrakLite®

- Traditional style fire helmet look with a matte finish
- ESS goggles and Traklite®
- Tough Thermoglas® outer shell
- M-Pact Plus molded inner liner
- Protects head against heat rise
- Extra layer of protection against falling objects
- Easy to adjust and secure Nomex® chinstrap with Postman's slide
- Sure-Lock® ratchet headband with removable fire resistant cotton brow pad
- Scotchlite® reflective striping retains reflectivity to 500°F (260°C)
- No burning, cracking or peeling
- Rip-Stop Nomex® ear and neck protector

**Available in Black, Red, White or Yellow*

Item #USTMG26TL(color) \$307.00





Bullard USTM Helmet w/ Goggles, Bourkes & TrakLite®

- Traditional style fire helmet look with a matte finish
- ESS Inter Zone 2 goggles
- Bourkes eyeshield
- Certified to NFPA 1971-2013 standard
- Chemical resistant fiberglass outer shell
- Traklite® helmet lighting system
- 8 forward-facing LED lights
- 6" brass stars and stripes eagle
- Accommodates any leather front
- High heat thermoplastic inner liner
- Comfortable Sure-Lock® ratchet headband
- Balanced 6-point nylon crown straps and crown pad
- Nomex® chinstrap with Quick Release buckle and Postman's slide fastener
- Rip-Stop Nomex® ear and neck protector

**Available in Black, Red, White or Yellow*

Item # USTMG26BRKTL(color) \$354.00



Bullard USTMG26 Helmet w/ ESS Goggles & Bourkes

- Traditional style fire helmet look with a matte finish
- ESS Inter Zone 2 goggles
- Bourkes eyeshield
- Certified to NFPA 1971-2013 standard
- 6" brass stars and stripes eagle
- Accommodates any leather front
- Chemical resistant fiberglass outer shell
- High heat thermoplastic inner liner
- Comfortable Sure-Lock® ratchet headband
- Balanced 6-point nylon crown straps and crown pad
- Nomex® chinstrap with Quick Release buckle and Postman's slide fastener
- Rip-Stop Nomex® ear and neck protector

**Available in Black, Red, White or Yellow*

Item # USTMG26BRK(color) \$275.00



FX Fiberglass Helmet w/ 4" Face Shield

- Modern style fire helmet look with a gloss finish
- Certified to NFPA 1971-2013 standard
- Chemical resistant fiberglass outer shell
- High heat thermoplastic inner liner
- Comfortable Sure-Lock® ratchet headband
- Balanced 6-point nylon crown straps and crown pad
- Nomex® chinstrap with Quick Release buckle and Postman's slide fastener
- Rip-Stop Nomex® ear and neck protector
- Hard coated optically-correct 4" faceshield

**Available in Black, Red, White, Yellow, Blue, Orange, Pink, Green or Lime*

Item # FX(color) \$180.00



FXG Fiberglass Helmet w/ ESS Goggles

- Modern style fire helmet look with a gloss finish
- Chemical resistant fiberglass outer shell
- ESS Inter Zone 2 goggles
- Certified to NFPA 1971-2013 standard
- Hard coated optically-correct 4" faceshield
- High heat thermoplastic inner liner
- Comfortable Sure-Lock® ratchet headband
- Balanced 6-point nylon crown straps and crown pad
- Nomex® chinstrap with Quick Release buckle and Postman's slide fastener
- Rip-Stop Nomex® ear and neck protector

**Available in Black, Red, White, Yellow, Blue, Orange, Pink, Green or Lime*

Item # FXG(color) \$180.00



FXTL Fiberglass Helmet w/ 4" Face Shield & TrakLite®

- Tough fiberglass outer shell
- Ultimate chemical and extreme heat resistance
- M-Pact Plus molded inner liner
- Protects head against heat rise
- Extra layer of protection against falling objects
- Rip-Stop Nomex® ear and neck protector
- Nomex® chinstrap with Quick Release buckle and Postman's slide fastener
- Comfortable Sure-Lock® ratchet headband
- Removable fire resistant cotton brow pad
- Scotchlite® reflective striping retains reflectivity to 500°F (260°C)
- No burning, cracking or peeling
- Large, durable stainless steel D-ring
- Certified to NFPA 1971-2013 standard

**Available in Black, Red, White, Yellow, Blue, Orange, Pink, Green or Lime*

Item # FXTL(color) \$260.00





FXGTL Helmet w/ ESS Goggles & TrakLite®

- Modern style fire helmet look with a gloss finish
- ESS Inter Zone 2 goggles
- Hard coated optically-correct 4" faceshield
- Traklite helmet lighting system
- 8 forward-facing LED lights
- Certified to NFPA 1971-2013 standard
- Chemical resistant fiberglass outer shell
- High heat thermoplastic inner liner
- Comfortable Sure-Lock® ratchet headband
- Balanced 6-point nylon crown straps and crown pad
- Nomex® chinstrap with Quick Release buckle and Postman's slide fastener
- Rip-Stop Nomex® ear and neck protector

**Available in Black, Red, White, Yellow, Blue, Orange, Pink, Green or Lime*

Item #FXGTL(color)

\$260.00



PX Thermoplastic Helmet w/ 4" Face Shield

- Modern style fire helmet look with a gloss finish
- Hard coated optically-correct 4" faceshield
- Certified to NFPA 1971-2013 standard
- Chemical resistant thermoplastic outer shell
- High Heat Thermoplastic Inner Liner
- Comfortable Sure-Lock® ratchet headband
- Balanced 6-point nylon crown straps and crown pad
- Nomex® chinstrap with Quick Release buckle and Postman's slide fastener
- Rip-Stop Nomex® ear and neck protector

**Available in Black, Red, White, Yellow, Blue, Orange or Lime*

Item #PX(color)

\$185.00



PXG Thermoplastic Helmet w/ ESS Goggles

- Modern style fire helmet look with a gloss finish
- ESS Inter Zone 2 goggles
- Hard coated optically-correct 4" faceshield
- Certified to NFPA 1971-2013 standard
- Chemical resistant thermoplastic outer shell
- High heat thermoplastic inner liner
- Comfortable Sure-Lock® ratchet headband
- Balanced 6-point nylon crown straps and crown pad
- Nomex® chinstrap with Quick Release buckle and Postman's slide fastener
- Rip-Stop Nomex® ear and neck protector

**Available in Black, Red, White, Yellow, Blue, Orange or Lime*

Item #PXG(color)

\$185.00



PXTL Helmet, w/ 4" Face Shield & TrakLite®

- Modern style fire helmet look with a gloss finish
- Hard coated optically-correct 4" faceshield
- Traklite helmet lighting system
- 8 forward-facing LED lights
- Certified to NFPA 1971-2013 standard
- Chemical resistant thermoplastic outer shell
- High heat thermoplastic inner liner
- Comfortable Sure-Lock® ratchet headband
- Balanced 6-point nylon crown straps and crown pad
- Nomex® chinstrap with Quick Release buckle and Postman's slide fastener
- Rip-Stop Nomex® ear and neck protector

**Available in Black, Red, White, Yellow, Blue, Orange or Lime*

Item #PXTL(color)

\$263.00



PXGTL Helmet w/ ESS Goggles & TrakLite®

- Modern style fire helmet look with a gloss finish
- ESS Inter Zone 2 goggles
- Hard coated optically-correct 4" faceshield
- Traklite helmet lighting system
- 8 forward-facing LED lights
- Certified to NFPA 1971-2013 standard
- Chemical resistant thermoplastic outer shell
- High heat thermoplastic inner liner
- Comfortable Sure-Lock® ratchet headband
- Balanced 6-point nylon crown straps and crown pad
- Nomex® chinstrap with Quick Release buckle and Postman's slide fastener
- Rip-Stop Nomex® ear and neck protector

**Available in Black, Red, White, Yellow, Blue, Orange or Lime*

Item #PXGTL(color)

\$263.00



Majestic PAC II Hood



Majestic PAC series hoods are UL certified to NFPA 1971-2013 edition. ATPV and HAF values found in accordance with ASTM International Standard. Test Method F1959-1999. Meet CAL-OSHA Requirements - passes. Federal Test 191, Method 5903.2; CAL OSHA Sections 3406(d) - Complies with OSHA Rule 29 CFR Part 1910, 269.

Hoods should not be altered to accommodate aftermarket accessories. Any aftermarket alteration, modification or addition will void the manufacturer's warranty and the UL certification of compliancy with the current NFPA standard. Machine wash warm, regular detergent, tumble dry low. No chlorine bleach or fabric softener, Do not dry clean.



Item #	Color/Style	Material	ATPV	
PACIUUCK	Black	Ultra CarbonKnight	Not Rated	\$41.60
PACIIPBI	Tan	PBI	Not Rated	\$34.20
PACIIPBG	Gold	PBI Gold	Not Rated	\$56.00
PACIINMXWHITE	White	100% Nomex®	11.2 cal/cm ² , HRC: 2	\$33.10
PACIICON	Convict Hood	100% Nomex®	11.2 cal/cm ² , HRC: 2	\$42.50
PACIICA	Captain America	100% Nomex®	11.2 cal/cm ² , HRC: 2	\$42.50
PACIIA	Americana	100% Nomex®	11.2 cal/cm ² , HRC: 2	\$42.50
PACIIOG	Old Glory	100% Nomex®	11.2 cal/cm ² , HRC: 2	\$42.50
PACIISPDMAN	Spiderman	100% Nomex®	11.2 cal/cm ² , HRC: 2	\$42.50
PACIINMB	White	Nomex® Blend	13.0 cal/cm ² , HRC: 2	\$26.00
PACIIDSTCAMO	Desert Camo	Nomex® Blend	13.0 cal/cm ² , HRC: 2	\$42.50
PACIIFLAME	Tye Dye Flame	Nomex® Blend	13.0 cal/cm ² , HRC: 2	\$42.50
PACIIMTD	Rainbow Tye Dye	Nomex® Blend	13.0 cal/cm ² , HRC: 2	\$42.50
PACIIPINK	Pink Swirl Tye Dye	Nomex® Blend	13.0 cal/cm ² , HRC: 2	\$42.50
PACIIREGCAMO	Green Camo	Nomex® Blend	13.0 cal/cm ² , HRC: 2	\$42.50
PACIITDBW	Tye Dye Blue & White	Nomex® Blend	13.0 cal/cm ² , HRC: 2	\$42.50
PACTDOW	Tye Dye Orange & White	Nomex® Blend	13.0 cal/cm ² , HRC: 2	\$42.50
PACIIPAT	Patriot Hood	Nomex® Blend	13.0 cal/cm ² , HRC: 2	\$42.50
PACIIHOG	Hog Hood	Nomex® Blend	13.0 cal/cm ² , HRC: 2	\$42.50
PACIIBRB	Urban Camo	Nomex® Blend	13.0 cal/cm ² , HRC: 2	\$42.50
PACIIRWB	Tye Dye Red/White/Blue	Nomex® Blend	13.0 cal/cm ² , HRC: 2	\$42.50
PACIIP84	Yellow	P84	22.9 cal/cm ² , HRC: 2	\$32.70
PACIISTING	Stinger Hood	P84	22.9 cal/cm ² , HRC: 2	\$42.50
PACIIC6	Black	Ultra C6	31.5 cal/cm ² , HRC: 3	\$41.60

Majestic PAC II Strategic Vent Zone Hood



Majestic PAC II SVZ – “Strategic Vent Zone” hood offers the most square inches of protection. CarbonKnight “venting panel” extends over the top of head to the back of the neck, allowing heat to dissipate without the risk of steam burn. The hood is a two piece notched shoulder design with 2 ply material throughout including the vent zone. Overall length 21”, one size fits all.

ITEM #PACIINBSVZ	\$27.50
White Nomex® Blend	ATPV: 13.0 cal/cm ² , HRC: 2
ITEM #PACIIC6SVZ	\$47.00
Black Carbon	ATPV: 31.5 cal/cm ² , HRC: 3
ITEM #PACIIP84SVZ	\$32.50
Yellow P84	ATPV: 22.9 cal/cm ² , HRC: 2



MM2 PAC II Hood



The MM2 is unlike any 2 ply “sock hood” on the market. It has 45 TPP, and that's with just 2 layers of material. It has a 2 ply hood-inner layer which is the Moisture Membrane layer. When exposed to flame, the C6 fibers expand, creating an oxygen starved environment so fire cannot continue. The material is self extinguishing, odor neutralizing, anti-static, and has low heat conductivity. With wider width for air circulation, it keeps you cool. It maintains performance values after laundering and it is finished to minimize shrinkage. Elastic face opening stretches to accommodate a circumference of at least 31” for ease of donning, snug fit, and proper seal with SCBA. NFPA 1971-2013 UL Certified. Complies with CAL-OSHA Requirements Sections 3406 and 3410(d) and OSHA Rule 29 CFR Part 1910, 269.

Item #MM2 **\$51.50**



Gildan® Ultra Cotton® Short Sleeve T-Shirt

Made of 6.1 oz, 100% cotton. Features a seamless double-needle 7/8" collar with double-needle sleeves and hem for added durability. Taped neck and shoulders help to minimize twisting and give excellent breathability. Rib knit crewneck and square bottom for added comfort. Great for both indoor and outdoor applications.



Item #2000NV(size) \$4.95
Available at additional cost: 2XL-5XL

The Firefighter's Cotton/Polyester Work Shirt

Made of 12 ounce, 95/5 cotton/polyester super weight fleece. Features a self material lay down collar with set-in sleeves. Knit cuffs and waist for a secure, comfortable fit. Seven inch front brass zipper. Right chest front pocket with 9" depth.



Item #811NV(size) \$39.70
Available at additional cost: 2XL-5XL

Deluxe Micro Plush Coral Fleece Blanket

Thick piled, ultra plush, super soft micro fiber fleece blanket. 100% polyester coral fleece. Features matching tricot edging which eliminates fraying and provides a stronger fancy finish. Lightweight, strong and extremely warm. Anti-pill material. 50" length x 60" width. Navy blue.



Item #PBF53NVY \$22.50



Our MyDesign Center Offers Custom Logo Printing, Silk Screen & Embroidery!

Apparel • Blankets • Bags • and Much More!



Promote Your local Fire Department with Custom Designs!



Call To Place Your Order Today!

Resistor™ 32 Disposable Foam Ear Plugs

Radians® Resistor™ 32 disposable foam uncorded ear plugs. Feature soft, slow-recovery foam for extreme comfort and outstanding noise reduction to protect your hearing. They are easy to roll down and insert. They expand slowly for a low pressure fit in virtually any size ear canal. They are conveniently packaged in individual polybags to keep each pair clean. Made in USA. Meets ANSI S3.19-1974 standards. NRR 32dB. Uncorded. 200 pairs per box.



Item #FP70 \$18.75/BX

R10 N95 Particulate Respirator

Jackson Safety* R10 NIOSH N95 particulate respirator with comfort straps and dual valves. Features a soft, comfortable foam nose pad with a cloth layer. Wide, comfortable user-preferred adjustable head straps. Dual, blue exhalation valves designed and positioned to help reduce eyewear fogging. 95% filter efficiency level effective against particulate aerosols free of oil. Disposable, latex free. 10 respirators per box.



Item #64260KC \$14.90/BX
Pricing on 10 or more boxes **\$12.90/BX**

Kevlar® Head Harness



#8057738



Polyester Head Harness



#8057748

Call For Pricing

AV-3000 Facepiece Respirator w/ SureSeal System

An innovative product that offers greater comfort and improved fit and performance. Scott's exclusive Top Down Convertibility means you can use a single facepiece with a single fit test for all of your NIOSH, CBRN, and NFPA-approved respirators. Plus, the AV-3000 with SureSeal accommodates the use of communication devices in all of these applications, enhancing communications while cutting overall inventory requirements and reducing costs. The U-shape of the SureSeal faceseal maintains a continuous circumferential seal around the user's face. Allows the facepiece to flex with every move, resulting in greater comfort for the wearer and higher fit factors during fit testing. For proper and quick donning, a positioning tab is located on the back of the head harness. The size of the head harnesses has been optimized to eliminate bunching and discomfort under helmets and hard hats. The design of the faceseal offers a wider landing area for more robust interface with protective suits, hoods, shrouds, and helmets. Approved for use with NFPA 2002 and 2007 Air-Paks.

Item #8057738(size#) Small (1) thru Large (3) Kevlar®
Item #8057748(size#) Small (1) thru Large (3) Polyester

Kevlar® Head Harness



#2012150

Scott AV-3000 HT Full Face Respirator w/o Bracket, Kevlar® Head Harness

Utilizes the proven SureSeal™ technology- a reverse reflex sealing surface that maintains a continuous seal around the user's face to provide enhanced comfort and reliable fit. Features a proprietary lens and bezel material to enhance thermal durability and wearer safety. Redesigned voice communication components to deliver improved intelligibility with or without communication devices. Robust communication bracket attachment with right- or left-side mounting for user preference. Compatible with current and new EPIC 3 communication devices. Designed for Top-Down Convertibility, the AV-3000 HT will allow for a single facepiece to be used for all NFPA/CBRN/NIOSH respiratory applications, reducing fit testing, training and inventory for lower total cost of ownership (pending approvals). Approved for use with NFPA 2013, 2007, and 2002 Edition Air-Pak SCBAs. ANSI Z87.1-2010 Impact Rated.

Item #2012150(size#) Small (1) thru Large (3) Kevlar®



Air-Pak X3 SCBA w/Pak-Tracker Locator, 4500 PSI

The Scott Safety Air-Pak is the most trusted, durable and easy-to-use SCBA (self contained breathing apparatus) in the fire service. Only Scott Safety uses redundant safety features, has a low cost of ownership and is firefighter designed and tested. Trusted more than any other by firefighters and emergency responders throughout the world. The Air-Pak X3 was designed with additional emphasis on enhancements to comfort, hose and wire management, weight distribution, fire ground communications and serviceability. Made in the USA.

- Available with CGA or Snap-change cylinder connection
- "External" HUD for easy air status updates of the team
- Dual redundant pressure reducer
- Vibralert tactile alarm
- Enhanced comfort
- Improved hose and wire management
- Reduced cost of ownership
- Industry's best warranty

Item #DX3314022200301
CGA Cylinder Connection

Item #DX3414022200301
Snap-Change Cylinder Connection

Call For Pricing



Eagle Attack Thermal Imager

Eagle Attack thermal imager camera with charger, power cord and standard accessory kit. The ultimate tactical camera with all the performance, quality, and durability firefighters demand. The Eagle Attack is the perfect combination of the best of both small and large imagers. Every element is designed with the user in mind. The result is a full-featured imager in a compact form, so you don't have to sacrifice quality for speed.



Call For Pricing

- Digital temperature readout in Fahrenheit
- Gray scale (white hot) imagery
- TAC imagery – Temperature Awareness Colorization, is software driven temperature based colorization.

Item #	Color	Temp. Option
TIP2BBKKL103B1	Black	Grayscale
TIP2BBKKL203B1	Black	TAC
TIP2BBKRL103B1	Red	Grayscale
TIP2BBKRL203B1	Red	TAC
TIP2BBKYL103B1	Yellow	Grayscale
TIP2BBKYL203B1	Yellow	TAC



SCBA SERVICE

We feature:

- Our Scott Safety Five-Star Service Center!
- SCBA Repair
- On-Site Annual Flow Testing
- Spare Cylinder Inventory
- Automatic Flow Test Notification Program

- State-of-the-Art Hydro Testing System
- SCBA Bottle Filling
- 24 Hour Emergency On-Site SCBA Fills
- Respiratory Evaluations

We Service:

- SCBAs, PAPRs, APR



Decon QuickBerm® Portable Multi-Zone Decon Station

Decon QuickBerm® portable multi-zone decon stations help prevent environmental contamination. For emergency deployment, these multi-stage berms with patented interior walls create wash down zones that safely capture and contain contaminated solutions. Watertight, lightweight PVC coated fabric provides wide range of chemical resistance. The 8" (203-mm) walls allow for easy entry and exit of the compartments. One 3/4" GHT drain fitting per zone. Order grates, #28428 and #28430, to keep personnel above liquid. Individual, leakproof zones prevent contaminated fluid from traveling from one zone to another. Quick and easy setup - no assembly required.

Item #	Zones	Capacity	Size	
28570	2	299 gal.	10' x 6' x 8"	\$725.00
28572	3	478 gal.	16' x 6' x 8"	\$935.00
28574	4	598 gal.	20' x 6' x 8"	\$995.00



Decon QuickBerm® Anti-Slip Grate

Durable, anti-slip grates keep personnel and other objects above contaminated wash down water. Made of chemical resistant, easy-to-clean polyethylene.

Item #28428 \$52.10

Size 2' x 2' x 2"

Item #28430 \$75.50

Size 4' x 2' x 2"



Thrifty-Sorb® Multi-Purpose Absorbent

Thrifty-Sorb® 100% all natural multi-purpose absorbent. Naturally cleans up spills and reduces hazards and accidents. Highly absorbent and fast acting. It absorbs liquids, including most oils, water, mixture of soluble oils, and water, grease, gas, acids, inks, and paints. Works on concrete surfaces. Great for use in work or home environments. Easy to use and transport.

Item #9767013 40 lb bag \$9.60/EA



Haz-mat Spill Kit

Quick response haz-mat spill kit for safe, fast handling of oil and petroleum based spills. Polypropylene constructed drum repels water. Twist-on lid.

30 65 95 Gal. Kit Content:

(3)	(20)	(20)	Spilfyter 4' x 3" haz-mat sock
(1)	(10)	(10)	Spilfyter 10' x 3" haz-mat sock
(3)	(6)	(6)	Spilfyter haz-mat sorbent pillow
(40)	(75)	(75)	Spilfyter 16" x 18" haz-mat pad
(5)	(10)	(10)	Unprinted bags, clear, 34" x 47"
(5)	(10)	(10)	7" Black cable tie
(1)	(2)	(2)	Green flock-lined 13" nitrile glove
(1)	(1)	(1)	Antifog chemical splash goggle
(1)	(1)	(1)	Emergency response book
(1)	(1)	(1)	Yellow polypropylene drum



**95 gal. also includes
(50) KC 9.1" x 16.8"
Wypall X80 wipers

Item #SKH30G	30 gallon Kit	\$195.00
Item #SKH65G	65 gallon Kit	\$365.00
Item #SKH95G**	95 gallon Kit	\$515.00

Universal Spill Kit

Universal spill kit is designed to help clean up oil coolants, solvents, water-based chemicals and water. Polypropylene constructed drum repels water. Twist-on lid.

30 65 95 Gal. Kit Content:

(3)	(12)	(20)	Universal sorbent tube, 4' x 3"
(1)	(5)	(10)	Universal sorbent sock, 10' x 3"
(3)	(6)	(6)	Industrial sorbent pillow 24" x 18"
(40)	(75)	(75)	Universal sorbent pads, 16" x 18"
(5)	(6)	(10)	Unprinted bags, clear, 32" x 47"
(5)	(6)	(10)	7" Black cable tie
(1)	(2)	(2)	Green flock-lined 13" nitrile glove
(1)	(1)	(1)	Antifog chemical splash goggle
(1)	(1)	(1)	Emergency response book
(1)	(1)	(1)	Yellow polypropylene drum



*30 gal. also includes
(1) Green Stuff
absorbent 1 lb. bottle

Item #SKM30G*	30 gallon Kit	\$165.00
Item #SKM65G	65 gallon Kit	\$365.00
Item #SKM95G**	95 gallon Kit	\$445.00

RuptureSeal™ Safely Seals Ruptures Fast

RuptureSeal™ is a revolutionary new way to safely seal ruptures in tanks, drums, transport vehicles, boats and containers of any size. The RuptureSeal™ RS-3 is a starter seal kit, ideal for plugging punctures as small as 5/32" up to 4" in diameter and 6" in length. RuptureSeal™ RS-3 contains three seals that are all temporary measures intended to last upwards of 10 hours in the rupture.

Kit includes:

- (1) 1" small circular seal
- (1) 2" medium circular seal
- (1) 2" x 6" rectangle forklift puncture seal

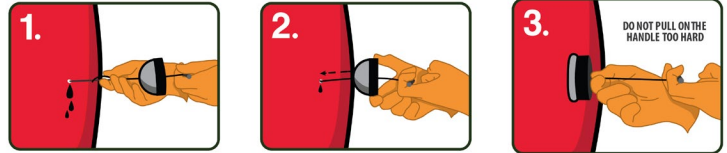


Item #RS3PACK \$169.00/PK

RuptureSeal™ 1" Quick Response Seal

RuptureSeal™ RS-1 are 1" circular seals, ideal for plugging punctures up to 1" in diameter.

Item #RS1RS \$42.50/EA



RuptureSeal™ 2" Quick Response Seal

RuptureSeal™ RS-2 are 2" medium circular seals, ideal for plugging punctures up to 2" in diameter.

Item #RS2RS \$52.50/EA

RuptureSeal™ 2" x 6" Quick Response Seal

RuptureSeal™ RS-2X6 is a 2" x 6" rectangular/ forklift puncture seal, ideal for plugging punctures up to 6" in length and 1/4" to 2" wide.

Item #RS2X6 \$86.25/EA



Emergency Spill Kits



Universal Spill Kit Includes:

- (3) Universal sorbent sock, 3" x 48"
- (20) Universal sorbent pads, 16" x 18"
- (6) Unprinted bags, clear, 32" x 47"
- (10) 7" Black cable tie
- (2) Green flock-lined 13" nitrile glove
- (1) Antifog chemical splash goggle
- (1) Non-woven drawstring bag



Item #SKMATK \$49.90/KT

Oil Spill Kit Includes:

- (4) Xorb oil sorbent mini boom, 3" x 4'
- (20) Spilfyter oil sorbent pads, 16" x 18"
- (6) Unprinted bags, clear, 32" x 47"
- (10) 7" Black cable tie
- (2) Green flock-lined 13" nitrile glove
- (1) Antifog chemical splash goggle
- (1) Non-woven drawstring bag



Item #SKOATK \$49.90/KT

Petroleum Spill Kit



Quick response universal maintenance spill kit for safe, fast handling of oil and petroleum based spills. Highly visible, durable containers keep spill response products readily available. Polypropylene constructed drum repels water. Twist-on lid.



30 65 95 Gal. Kit Content:

- | | | | |
|------|------|------|--------------------------------------|
| (6) | (20) | (20) | Xorb oil sorbent mini boom, 4' x 3" |
| (1) | (10) | (10) | Green Stuff absorbent sock, 10' x 3" |
| (3) | (6) | (6) | Spilfyter MRO oil sorbent pillow |
| (40) | (75) | (75) | ESP 15" x 18" heavy wgt. oil pad |
| (5) | (10) | (10) | Unprinted bags, clear, 37" x 47" |
| (5) | (10) | (10) | 7" Black cable tie |
| (1) | (2) | (2) | Green flock-lined 13" nitrile glove |
| (1) | (1) | (1) | Antifog chemical splash goggle |
| (1) | (1) | (1) | Emergency response book |
| (1) | (1) | (1) | Yellow polypropylene drum |

**95 gal. also includes (50) KC 9.1" x 16.8" Wypall X80 wipers

Item #SKO30G 30 gallon Kit

Item #SKO65G 65 gallon Kit

Item #SKO95G 95 gallon Kit**

\$165.00

\$365.00

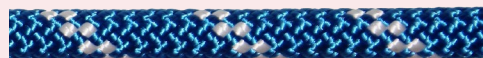
\$445.00



CMC Rescue Static-Pro Rope

CMC Rescue Static-Pro™ Lifeline Rope, 1/2". An extremely low-stretch kernmantle rescue lifeline constructed of 100% high-tenacity polyester fiber. Excellent choice for high lines, long rappels and many mechanical advantage haul systems. Its low electrical conductivity has advantages when working on towers or charged electrical equipment. Polyester fibers will not absorb fibers and have better resistance to acid. These ropes are favored for their excellent hand, knotability and UV resistance. UL Classified to NFPA Standards. Made in the U.S.A. 1/2" total diameter.

Item #281200FT	White/Blue Stripe	\$1.27 /FT
Item #281201	Orange/White Stripe	\$1.44 /FT
Item #281202	Blue/White Stripe	\$1.44 /FT
Item #281203	Red/White Stripe	\$1.44 /FT
Item #281207	Yellow/White Stripe	\$1.44 /FT



New England KMIII Kernmantle Ropes

New England KM-III 32-Strand Static rope, 300'. A polyester sheath with nylon core allows for an incredibly smooth sheath, higher tensile strengths, and superior handling characteristics. Best used in applications in rappelling, caving, rescue, top roping, fixed rope applications, hauling and, life saving. NFPA and CE1891 approved and certified. 1/2" diameter. 300' total length.

Item #330016330	White (330')	\$313.50 /RL
Item #33011600300	Red	\$282.25 /RL
Item #33021600300	Green	\$282.25 /RL
Item #33031600300	Blue	\$282.25 /RL
Item #33041600300	Black	\$282.25 /RL
Item #33051600300	Orange	\$282.25 /RL

CMC Rescue Rope Bags

Solid performer for years, these popular rope bags feature a variety of innovative elements. Contoured backpack-style shoulder straps offer greater comfort when carrying a heavy bag. Bag tops are made of rugged pack cloth for easier closing. Handles, just inside the top, can be used to hold the bag open for quicker stuffing or to carry the bag from the top, haul-bag style. A soft rubber side-carrying handle is comfortable on the hand. The bottom of the bag has a large grommet to pass the rope through, plus sewn web loops to tie the rope end off inside or outside of the bag. These rope bags are all CORDURA® nylon and feature an external web handle.



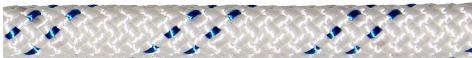
Item #430201	ORG	150' - 200' Cap.	\$62.00
Item #430205	BLK	150' - 200' Cap.	\$62.00
Item #430302	BLU	150' - 200' Cap.	\$73.00
Item #430402	BLU	325' - 400' Cap.	\$76.00



New England MultiLine II Ropes

New England's most popular 3-strand bull rope. Composite rope made of polyester yarns wrapped around a core of polyolefin in each strand. Spun polyester is added to the surface for better grip and chafe protection. Identified by 2 orange markers on the surface strand. Available in 150' sections, 600' spools or cut to order. 7300-20 series is 5/8" diameter and is 8,200 tensile strength. 7300-24 series is 3/4" diameter and is 10,500 tensile strength.

Item #	Diameter	Length	
7300-20-150	5/8"	150'	\$135.00 /RL
7300-20-600	5/8"	600'	\$480.00 /RL
7300-24-150	3/4"	150'	\$160.00 /RL
7300-24-600	3/4"	600'	\$588.00 /RL



KMIII Static 1/2" Kernmantle Ropes

New England KMIII static 1/2", 12mm kernmantle rope. KMIII static rope is a balanced construction consisting of a continuous filament polyester cover braided over a unidirectional nylon core. KMIII is designed to meet the rigorous requirements associated with rescue and rappelling operations. KMIII is dual certified (CE and NFPA). Applications include, vertical lifeline, rappelling, caving, canyoneering, work positioning, high lines, fall protection, and climbing. White rope with blue tracers.

Item #3300-16-100	100'	\$95.00 /RL
Item #3300-16-150	150'	\$142.50 /RL
Item #3300-16-600	600'	\$531.75 /RL
Item #3300-16-1200	1200'	\$1062.50 /RL



CMC Rescue ProSeries® Reflective RIT Rope, 5.6mm

CMC Rescue ProSeries® Reflective RIT Rope. The already high visibility RIT Rope with Technora® and polyester sheath has been improved by adding a strand of highly reflective 3M™ tape. The 100% Technora® core provides high strength in adverse conditions. The line is supple enough to pack easily, but firm enough to feel against the floor when following it in low-visibility conditions when wearing gloves. 5.6mm diameter.

Item #292005	\$1.13 /FT
---------------------	-------------------



CMC Rescue Escape Line Kernmantle Rope, 8.2mm

CMC Rescue Escape Line Kernmantle Rope. Low-stretch kernmantle escape line rope provides outstanding performance with its polyester sheath covering a nylon case. Large enough for easy handling, while still compact when stuffed in a bag or pocket. Bright orange color provides high visibility. UL certified to NFPA standards. 8.2mm total diameter. Made in the U.S.A.

Item #K05100	\$1.05 /FT
---------------------	-------------------

CMC Rescue Pulley, 1/2" Diameter

This lightweight, full-strength, Prusik-minding pulley is ideal for mountain rescue, swiftwater, or other technical teams where equipment weight is a significant consideration. Sealed ball bearings provide high efficiency and aluminum side plates protect the rope. An extremely low-profile stainless steel axle assembly reduces snagging on rocks, roots, and uneven surfaces.



Item #300301 \$60.00

CMC Rescue NFPA Rescue 8 Descender, Aluminum

Machined from 1/2" (12.5mm) plate, the Rescue 8 design has been refined for even better performance with today's selection of rescue rope. Descenders no longer routinely use 5/8" (16mm) rope, so the smaller dimensions of the Rescue 8 provide greater control.



Item #300840 \$63.00

CMC Rescue Escape Artist Rescue Descender

The Escape Artist is quickly becoming the industry standard, thanks to its hands-free edge transition and optimal descent control. Intended to be pre-rigged on an escape line and kept ready for immediate use, the Escape Artist pays out the rope smoothly and then locks when loaded, leaving both hands free to negotiate the exit. Squeezing the lever controls the descent rate.



Item #300913 \$130.00

CMC Rescue ProSeries® Carabiners

The first aluminum carabiner to meet NFPA strength requirements for general use. Patented key-lock design eliminates snagging when removing the carabiner from your harness.



Item #300221 Screw-Lock, 1.1" Opening **\$38.00**

Item #300253 (Red) Auto-Lock, 2.1" Opening **\$61.00**

Item #300262 Manual-Lock, 1.1" Opening **\$49.00**

CMC Rescue ProSeries® Pulley

No detail has been overlooked in this high-efficiency pulley. This compound or complex system workhorse features a precision sealed ball bearing to minimize loss of mechanical advantage. The large carabiner hole supports multiple carabiners, and the smooth, rounded edges on the high-strength aluminum side plates minimize rope fraying. The bottom is shaped for maximum efficiency with Prusik hitches but also works well with Gibbs-type ascenders. Large anodized aluminum sheaves provide efficiency, and low-profile axle fasteners reduce snags when the pulley is moving.



Item #	Pulley	Color	Dimensions	
300441	Single	Blue	2-1/4" x 1/2"	\$100.00
300442	Double	Gold	2-1/4" x 1/2"	\$136.00
300461	Single	Red	3-3/4" x 1/2"	\$131.00

CMC Rescue Single Swivel Pulley, Stainless Steel

The Prusik-minding pulley (PMP) is ideal for high anchor points or tripod use. The rotating swivel aligns the rope with the direction of the pull. Its stainless steel sheave can be used with either rescue rope or wire cable. By combining the swivel with the pulley, overall system length is minimized, increasing travel.



Item #300430 \$126.00

CMC Rescue MPD G-Use Rated Descent Control Pulley

The MPD allows you to go from lowering to raising without changing hardware. More than nine years of research and development went into the patented Multi-Purpose Device (MPD), which features major innovations in advanced technical hardware for rope rescue professionals. For more info please visit www.DiValSafety.com



Item #333000 \$695.00

CMC Rescue 100% Stainless Steel Carabiners

The most corrosion-resistant carabiner available. Compact enough to operate easily with one hand and has a side-swing gate. Will fit over a standard litter rail. The key-lock design eliminates snagging.



Item #300010 CMC (0.9" Opening) **\$48.00**

Item #300011 ANSI Cert. (0.9" Opening) **\$50.00**

CMC Rescue Rack w/ Turbo Bar

The CMC Rescue Rack offers several innovative features to provide enhanced performance. The "fat" aluminum bars provide excellent control for rescue loads. The bars are center drilled to reduce weight and allow better heat dissipation. The finish also prevents transfer of material to the rope, common with bare aluminum bars.



Item #300890 \$152.00

Petzl Self-Braking Descender, Large

An excellent descender for working on rope, the Petzl IDs auto-locking feature combines with a locking position for the handle. Additional safety features include an anti-panic function that stops the descent if the handle is pulled too far and an anti-error safety catch that reduces the risk of an accident from incorrect rigging on the rope. Maximum descent distance: 660' (200 m).



Item #345D23 \$250.00

CMC Rescue Extra Large Steel D Carabiner

Made of 1/2" (12.7mm) diameter heat-treated steel stock, this industrial sized, high-strength carabiner features a wide gate opening, useful for attaching to rungs on aerial ladders, buckets and industrial rescue or rope access anchor points that are too big for most rescue carabiners. The screw-lock gate opening is a full 1.53" (39mm).



Item #371290 \$37.75

Rescue NoWorries™ Rope Stop Descenders

Descent device easily regulates friction and provides a smooth descent in varied conditions. The handle acts as a dynamic variable friction lever, capable of going from a complete stop to complete go, allowing the user to regulate the descent providing greater flexibility with larger loads. The self-braking system allows you to stop the descent if you let go of the handle and protects you if you were to become unconscious during a descent.

Item #	Stop Style	Material	Suits Rope
8700068	Single	Alum	7/16"-1/2"
8700070	Single	SS	7/16"-1/2"
8700071	Single (Double Rope)	Alum	7/16"-1/2"
8700077	Double	Alum	1/2"
8700079	Double	Alum	7/16"
8700081	Double	SS	7/16"

\$119.05
\$168.30
\$131.45
\$255.10
\$220.15
\$382.95



RopeCraft™ Rescue & Descent Mechanical Rope Protection

Utilizing a series of rollers that aid in guiding and protecting moving rope with minimal friction, these aluminum mechanical rope protectors guide your rope over an edge, along the ground, or prevent lines from tangling when using multiple ropes.

Item #	Edge Use	Rigging Pts.	
8700141	Man Made	8 on each bay	\$261.90
8700142	Natural	4	\$339.10
8700302	Both	4 end quick links	\$146.35



Rescue & Descent OzPod™ Modular Rescue Frame

A total edge management system designed to provide a raised anchor point above a hole, adjacent to an exposed edge, or cantilevered over an exposed edge to provide a safe and easy method for access and rescue. Its versatile modular design allows it to be configured into a variety of multipurpose rated rescue frames depending on the specific application required. It can be used as a luffing edge rescue frame, a tripod, or as a mobile building maintenance unit.

Item #8700006

\$5092.50



Universal Suspension Workseat

Wide sturdy seat for added stability and mobility when working in suspension or industrial rope access applications to reduce fatigue when suspended in a harness for long periods of time, while allowing complete leg mobility and freedom of movement for climbing. Cushioned padded seat with breathable mesh lining provides the ultimate in comfort and performance when working in suspension for long periods of time. Easy adjust hardware allows the seat to be adjusted for varying degrees of suspension. Durable polyester rugged construction endures rough use, standing up to long periods of outdoor elements including sun exposure without tearing or fraying for added longevity.

Item #1150414

\$189.50



Rescue & Descent ExPlorer™ Retrofit Chest Ascender

This compact and lightweight retrofit chest ascender is designed to easily fit between the suspension and fall arrest sternum D-Rings of your climbing or rescue harness to create a simple, versatile and efficient climbing/positioning system. Features a lower hole for easy connection to your harness via quick-link or carabiner and an upper webbing slot with attachment kit for increased versatility and ease of installation. An integral webbing slot in combination with the attachment kit keeps the ascender in place during suspension for smooth operation. Twisted body ensures rope remains close to the body for easier ascending while providing easy access to the cam.

Item #8700522

\$68.05



Rescue & Descent ExPlorer™ Hand Ascender

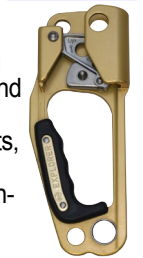
The handheld ascender is used in combination with your climbing or rescue harness to create a high performance, versatile and efficient ascent system that utilizes a locking cam for ascending rope lifelines. Ergonomically shaped and includes a comfort grip handle for added ease-of-use in a variety of conditions and ascents. Features 4 rigging points, 2 at the top and 2 at the bottom for organizing your lines and the attachment of connecting devices such as carabiners, lanyards, foot loops and other equipment to create a diverse range of effective and safe ascent systems.

Item #8700523 Left Hand

\$82.45

Item #8700524 Right Hand

\$82.45



RigMaster™ Rescue & Descent Aluminum Rigging Plate

The rigging plate provides a lightweight solution that is ideal for simple anchor systems and load distribution, ensuring neat, tangle free and organized lines. Small lightweight design provides greater flexibility with anchor points. High strength to weight ratio. Engineered for maximum strength while using minimal material providing a heavy duty rigging plate that is lightweight, easy to carry, use and rig. Durable aluminum construction with anodized gold finish for superior corrosion resistance, strength and durability.

Item #2189996 14 pt. Rectangular

\$90.65

Item #2189998 10 pt. Oval w/ Rubber Ring

\$56.75

Item #2189997 6 pt. Triangle

\$31.95

Item #2189999 5 pt. Paw Shaped

\$31.95



Rescue & Descent Rigging Pulley

Ideal for use in rope hauling and lowering systems or in multiple pulley systems. Incorporates swivel cheeks that extend beyond the surface of the rope protecting it from abrasions, while allowing you to place the rope in the pulley at any point along the line. Sintered self lubricating bushing spreads the load over a larger area of the axle. Stainless steel axle. Permanently riveted. Anodized aluminum construction.



Item #	Style	Diameter	Suits Rope	
8700012	Single	1.50"	up to .44" (11mm)	\$35.55
8700018	Single	2.00"	up to .50" (13mm)	\$58.25
8700014	Double	2.00"	up to .50" (13mm)	\$127.80
8700017	Triple	2.00"	up to .50" (13mm)	\$209.25
8700021	Single, Double Ended	2.00"	up to .50" (13mm)	\$54.10
8700015	Double, Double Ended	2.00"	up to .50" (13mm)	\$127.80
8700528	Triple, Double Ended	2.00"	up to .50" (13mm)	\$209.25
8700013	Prusik Minding Single	1.50"	up to .44" (11mm)	\$55.65
8700022	Prusik Minding Single	2.00"	up to .50" (13mm)	\$81.95

Rescue & Descent Carabiner

Serves as a link to securely attach components between equipment, operator and anchorage offering maximum strength and durability. Built to stand-up to the toughest environments, providing added longevity.

**All Carabiners have at least a 5000 lbs Min. Breaking Strength*



Item #	Style	Mat. - Opening	Lock Mech.	
8700561	Oval w/ Pin Eye	Steel 0.63"	Screw Gate	\$17.50
8700167	Oval	Alum. 0.75"	Screw Gate	\$20.50
8700168	SM Offset D	Alum. 0.63"	Screw Gate	\$23.25
8700201	LG Offset D	Steel 1.13"	Screw Gate	\$21.50
2000172	LG Offset D	SS 1.00"	Auto, Triple Action	\$69.50
8700200	SM Offset D	Alum. 0.63"	Auto, Triple Action	\$20.50
8700198	MD Offset D	Alum. 0.88"	Screw Gate	\$26.00
2000171	MD Offset D	Alum. 0.98"	Auto, Double Action	\$26.50
9509238	Delta Quick Link	Steel 0.25"	Manual Screw	\$5.90
8700425	D Style Quick Link	Steel 0.38"	Manual Screw	\$33.75

Rescue & Descent Kernmantle Rope

Ideal for use in a wide variety of rescue and industrial applications requiring the added safety and performance. High performance rope that is less likely to fray or snag. High strength and hard wearing. The protective outer sheath delivers greater resistance to minor cuts, abrasions, chemicals and grime, as well as heat resistance. Integral tracer thread for easy identification and traceability.



Item #	Style	Size	Length	Color	
8705115	Both Ends Finished w/ Thimble	.44" (11mm)	50 ft	Blk/Org	\$110.00
8705116	Both Ends Finished w/ Thimble	.44" (11mm)	100 ft	Blk/Org	\$165.00
8705117	Both Ends Finished w/ Thimble	.44" (11mm)	200 ft	Blk/Org	\$295.00
8705118	Both Ends Finished w/ Thimble	.44" (11mm)	325 ft	Blk/Org	\$455.00
8705119	Both Ends Finished w/ Thimble	.44" (11mm)	410 ft	Blk/Org	\$550.00
8705120	Both Ends Finished w/ Thimble	.44" (11mm)	650 ft	Blk/Org	\$830.00
8705122	Both Ends Finished w/ Thimble	.50" (13mm)	50 ft	Blk/Org	\$130.00
8705123	Both Ends Finished w/ Thimble	.50" (13mm)	100 ft	Blk/Org	\$207.15
8705124	Both Ends Finished w/ Thimble	.50" (13mm)	200 ft	Blk/Org	\$375.00
8705125	Both Ends Finished w/ Thimble	.50" (13mm)	325 ft	Blk/Org	\$567.45
8705126	Both Ends Finished w/ Thimble	.50" (13mm)	410 ft	Blk/Org	\$688.70
8705127	Both Ends Finished w/ Thimble	.50" (13mm)	650 ft	Blk/Org	\$1057.30
8700600	Sewn Loop Chest Prusik	.25" (6mm)	1.7 ft	Red/Ylw	\$20.75
8700601	Sewn Loop Chest Prusik	.25" (6mm)	3.9 ft	Red/Ylw	\$26.50
8700602	Sewn Loop Purcel	.25" (6mm)	5.6 ft	Red/Ylw	\$32.15
8700603	Sewn Loop Prusik Foot End	.25" (6mm)	3 ft	Ylw/Blk	\$26.50
8700604	Sewn Loop Prusik Head End	.25" (6mm)	5.6 ft	Ylw/Blk	\$37.00
8700605	Sewn Bound Loop Prusik, MD	.31" (8mm)	1.3 ft	Blu/Blk	\$16.75
8700606	Sewn Bound Loop Prusik, MD	.31" (8mm)	1.8 ft	Blu/Blk	\$17.25
8700607	Sewn Bound Loop Prusik, MD	.31" (8mm)	2.1 ft	Blu/Blk	\$18.00



Quaker Turnout Safety Gear

Quaker Safety turnout gear is completely customizable and made to order. There is a broad selection of styles, materials and options to choose from when customizing your gear. Quaker Safety uses the finest raw materials available from recognized suppliers in the fire service industry and carefully controls the garment manufacturing process with their ISO 9001 certified procedures. Products are warranted for a maximum of five years from the date of manufacture that the garment will be free from defects in materials and workmanship.



1. Choose your style

STANDARD FEATURES OF OUR 6 COAT STYLES

		AXIS	RADIUS	PATRIOT	QS-103	TRADITIONAL	RESPONDER
Patterning	Flexion patterning in all layers	•	•	•	•	•	•
Coat Length	Standard length	32"	30"/36"	31"/33"	30"	35"	35"
	Optional tall length	34"	32"/38"	33"/35"	32"	-	-
	Optional short length	28", 30"	28"/34"	29"/31"	28"	-	-
4-Layer Storm Flap	Streamlined narrow storm flap	•	•	•	•	•	•
Closure System	Brass Zipper with 1.5" FR hook & loop tape	•	•		•	•	•
	Nylon Zipper with 1.5" FR hook & loop tape			•			
Expandable Pockets	Expandable bellows/handwarmer pockets (9"h x 9"w x 2"d)	•	•				
	Expandable bellows pockets (7"h x 10"w x 2"d)			•			
	Expandable handwarmer pockets (9"h x 9"w)				•		
	Expandable patch pockets (9"h x 10"w)					•	•
Reinforcements	Thermally enhanced shoulders and upper back	•	•		•	•	•
	Thermally enhanced shoulders			•			
	Thermally enhanced elbows	•	•	•	•	•	•
	Fabric reinforced cuffs	•	•	•	•	•	•



STANDARD FEATURES OF OUR 8 PANT STYLES

		AXIS	AXIS-GPS	RADIUS	RADIUS-GPS	PATRIOT	QS-103	TRADITIONAL	RESPONDER
Patterning	Full cut patterning in all layers	•	•	•	•	•	•	•	•
	Pleated/darted knees	•	•						
	Full cut knees			•	•	•	•	•	•
Front	Low rise	•		•					
	Waist level		•		•		•	•	•
	Mid rise					•			
Back	3" gradual rise	•		•		•			
	Waist level		•		•			•	•
	6" high back						•		
4-Layer Fly Flap	Streamlined narrow fly flap	•	•	•	•	•	•	•	
Closure System	1.5" FR hook & loop tape, snap with hook & dee	•	•	•	•		•	•	
	1.5" FR hook & loop tape, with hook & dee					•			
Pockets	Expandable bellows pockets (9"h x 10"w x 2"d)	•	•	•	•	•	•		
	Patch pockets (8"h x 7.5"w)							•	
Reinforcements	Thermally enhanced knees	•	•	•	•	•	•	•	
	Fabric reinforced cuffs	•	•	•	•	•	•	•	
Suspenders	2" wide elastic H back with leather ends			•	•	•	•		
	2" wide padded quick adjust H back with metal ends	•	•					•	



Please Call For Pricing & Ordering Information

2. Customize your gear - features and options

Outer Shells



PBI Max™ 7.0

- * 7.0 ounces per square yard
- * Blend of 70% PBI/KEVLAR® spun yarns and 30% KEVLAR® filament yarns
- * Twill weave
- * Teflon® F-PPE enhanced water repellent finish
- * Degradation temperature: 1,300° F
- * Available in gold and black



Armor™ AP

- * 6.5 ounces per square yard
- * Blend of 33% NOMEX® spun yarns and 67% KEVLAR® spun and filament yarns
- * Twill weave
- * Teflon® F-PPE enhanced water repellent finish
- * Degradation temperature: 1,050° F
- * Available in black, gold and khaki



Brigade® 750

- * 7.5 ounces per square yard
- * Blend of 93% NOMEX® and 5% KEVLAR® spun yarns and 2% P-140 (anti-static)
- * Plain weave
- * Shelltite™ water repellent finish
- * Degradation temperature: 700° F
- * Available in black, natural/off-white, red, royal, tan and yellow



Gemini™ XT

- * 7.5 ounces per square yard
- * Blend of 40% PBI and 60% KEVLAR® spun yarns reinforced with a high-strength filament grid
- * Modified plain weave
- * Super Shelltite™ enhanced water repellent finish
- * Degradation temperature: 1,300° F
- * Available in natural and black



Advance™

- * 7.0 ounces per square yard
- * Blend of 40% NOMEX® and 60% KEVLAR® spun yarns
- * Rip stop weave
- * Super Shelltite™ enhanced water repellent finish
- * Degradation temperature: 1,050° F
- * Available in black, gold, khaki and yellow



Ultra™

- * 7.5 ounces per square yard
- * Blend of 20% NOMEX®, 20% PBO, and 60% KEVLAR® spun yarns
- * Rip stop weave
- * Super Shelltite™ enhanced water repellent finish
- * Degradation temperature: 1,200° F
- * Available in light gold and dark gold

Thermal Liners



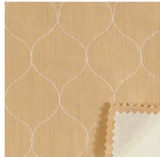
Glide™ Gold 2-Layer

- * 7.4 ounces per square yard
- * Two layers of NOMEX® E-89™ spunlace batt quilted with NOMEX® thread to an inherently slick filament KEVLAR® and spun NOMEX®/ Lenzing FR® blend twill weave face cloth



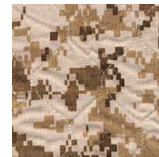
Aralite® SL2/SL3

- * 7.2/8.0 ounces per square yard
- * Two/three layers of NOMEX® E-89™ spunlace batt quilted with NOMEX® thread to a spun NOMEX® plain weave face cloth
- * Wickwell™ Plus enhanced wicking finish



Caldura® SL2i

- * 7.7 ounces per square yard
- * Two layers of NOMEX® E-89™ spunlace batt quilted with NOMEX® thread to an inherently slick spun Lenzing FR®/ KEVLAR®/Nylon and filament KEVLAR® blend twill weave face cloth * Wickwell™ Plus enhanced wicking finish



Bravo™

- * 7.4 ounces per square yard
- * Two layers of Aramid/Lenzing FR® blend spunlace batt quilted with NOMEX® thread to a spun NOMEX®/Lenzing FR®/ Polyamide/ KEVLAR® blend plain weave face cloth



OMNI Synergy 2 Layer

- * 7.1 ounces per square yard
- * Two layers of Basofil®/Aramid blend spunlace batt quilted with NOMEX® thread to a calendered spun NOMEX® plain weave face cloth

Moisture Barriers



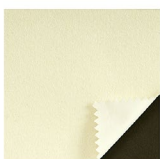
CROSSTECH® Black, 2F

- * 4.7 ounces per square yard
- * NOMEX® IIIA woven pajama check substrate with a water repellent finish laminated to a CROSSTECH® enhanced bicomponent membrane comprised of an expanded PTFE (Teflon®) matrix with a continuous hydrophilic and oleophobic coating that is impregnated into the matrix
- * 3.5 year warranty



Stedair® 3000

- * 5.0 ounces per square yard
- * NOMEX® E-89™ non-woven substrate laminated to an enhanced bicomponent membrane comprised of an expanded PTFE (Teflon®) matrix with a continuous hydrophilic and oleophobic coating that is impregnated into the matrix
- * 3 year warranty



GORE™ RT7100, 3D

- * 4.6 ounces per square yard
- * Needle punched NOMEX® non-woven substrate laminated to a GORE™ enhanced bicomponent membrane comprised of an expanded PTFE (Teflon®) matrix with a continuous hydrophilic and oleophobic coating that is impregnated into the matrix
- * 3 year support program



Stedair® 4000

- * 5.5 ounces per square yard
- * NOMEX® IIIA woven pajama check substrate laminated to an enhanced bicomponent membrane comprised of an expanded PTFE (Teflon®) matrix with a continuous hydrophilic and oleophobic coating that is impregnated into the matrix
- * 4 year warranty



Mobile Single Sided Ready Rack®

Mobile Ready Rack® gets your department's turnout where you need it, when you need it and provides air circulation drying. All of this requires very little space. Each compartment on the rack holds a complete set of turnout gear plus utility items. The exclusive full-length dividers separate each compartment providing free air-flow. Side and back ledges keep turnout gear secure and casters can be locked in place. Assembles in just minutes with no tools needed. Each Ready Rack® compartment includes Dry Kwik coat hangers, utility hooks, and member name plate. 72" L x 21" D x 79" H.



Item #MSS3	Chrome Rack	With Three, 24" Sections	\$837.00
Item #MSS4	Chrome Rack	With Four, 18" Sections	\$907.00
Item #MSS5	Chrome Rack	With Five, 14" Sections	\$977.00
Item #MSS6	Chrome Rack	With Six, 12" Sections	\$1047.00
Item #MSS3R	Red Rack	With Three, 24" Sections	\$837.00
Item #MSS4R	Red Rack	With Four, 18" Sections	\$907.00
Item #MSS5R	Red Rack	With Five, 14" Sections	\$977.00
Item #MSS6R	Red Rack	With Six, 12" Sections	\$1047.00
Item #MSS3B	Black Rack	With Three, 24" Sections	\$837.00
Item #MSS4B	Black Rack	With Four, 18" Sections	\$907.00
Item #MSS5B	Black Rack	With Five, 14" Sections	\$977.00
Item #MSS6B	Black Rack	With Six, 12" Sections	\$1047.00



Shown with Turnout Gear

Ready Rack® PPE & Dryer

Constructed from heavy-duty steel construction with a white powder coat finish. Custom built for firefighter turnout gear (PPE) and hose. Simple controls for easy operation. Factory preset temperature ensures proper drying for each unique turnout item. Standard accessories include: (4) Air Flow coat / PPE hangers, (2) Air Flow boot hangers, Glove rack (holds 26 gloves).



Item #PPEHD \$7995.00

Ready Rack® Hose Drying Rack

Groves Ready Rack® hose drying rack built with wheels for easy mobility and multiple hanger rods for hanging hose. 57" H x 42" L x 24" D.

Item #MHD42 \$650.00



#MHD42

Ready Rack® Heavy Gauge Stainless Steel Hose Washer

Heavy gauge stainless steel construction. Cleans 50 feet of 4" in diameter hose in two minutes. Easy one person operation- no pedals to hold down. Automatic feed- drive motor powers the washer brushes and exit squeegees. Water boost pump pressurizes standard garden hose to 3000 psi for powerful cleaning. Two adjustable high pressure soap injectors. Two 10" nylon scrub brushes provide a deep and thorough scrubbing. Ten high pressure rinse injectors. Two 12" polymer disks with nylon rollers move the hose through smoothly. Faster cleaning time, speed of 25ft/min. Wash and rinse one process. Shut off water valve at machine. 220v- 20amp power requirement (110v-30amp option available) 6' flexible drain line from bottom of cabinet. Rear panel for easy access to components for service or maintenance. Mobile, heavy duty 4" casters. Compact design (46" L x 40" H x 24" D).



Item #RRHW \$13495.00

Ready Rack® Air Flow Boot Hanger

Holds up to 3 pairs of boots. Inverted design promotes air flow. Great addition to the Ready Rack® PPE dryer.

Item #AFBH \$391.00



Ready Rack® Air Flow Coat Hanger

Wide frame opens up PPE promoting air circulation. Heavy duty design. Designed to work with the Ready Rack® PPE dryer.

Item #AFCH \$319.00





#MPSSH



#MPSSHC



#MPSSHSC



#MPSSS

Hose Configuration

Includes:

- (3) #SB2G



Hose and Cylinder Configuration

Includes:

- (2) #SB1
- (4) #VSGS

Hose/SCBA/Cylinder Configuration

Includes:

- (3) #VSGS
- (2) #SB1
- (1) #SB2G
- (8) #LBSC

SCBA Configuration

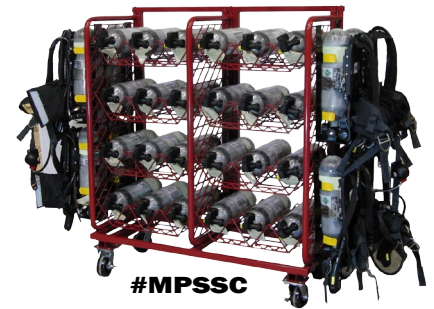
Includes:

- (24) #LBSC

Ready Rack® MPSS - Multi-Purpose Storage System

Developed to store different equipment in already tight quarters. This cart can do it all. Store 24 SCBA in a small footprint, ready to deploy at a moments notice or up to 32 cylinders or 1400' of 2 1/2" hose. At 59 1/2" tall x 51" wide x 21" deep this is the most versatile surplus storage system in the fire service. Custom configurations available per your request.

Item #MPSSH	MPSS - Hose Configuration	\$620.00
Item #MPSSS	MPSS - SCBA Configuration	\$2874.00
Item #MPSSC	MPSS - Cylinder Configuration	\$1525.00
Item #MPSSHC	MPSS - Hose and Cylinder Configuration	\$672.00
Item #MPSSHSC	MPSS - Hose/SCBA/Cylinder Configuration	\$1455.00
Item #SB1	1 Pair of Single Compartment Hose Ledge	\$15.00
Item #SB2G	1 Pair of Double Compartment Length Hose Ledge	\$30.00
Item #LBSC	Air Pack L-Bracket with (2) Speed Clips	\$65.00
Item #VSGS	V-Shelf for Cylinders	\$39.00



#MPSSC

Cylinder Configuration

Includes:

- (8) #VSGS
- (8) #LBSC

Ready Rack® Mobile Hose Cart

Save time and eliminate back strain from carrying hose with our mobile hose cart. Four heavy duty brake casters allow for ease of rolling and hold the cart in place when loading or unloading. Heavy duty steel rails with a durable red powder coat finish easily support 100' coils. Ships knocked down for freight savings. Easy to assemble. An optional 20" x 31" cover plate (CP31 ordered separately) provides a flat surface for holding bottle carriers or other items.



#HC963T



#HC642T



#CP31

<u>Item #</u>	<u>Size</u>	<u>Tiers</u>	<u>Capacity</u>	
HC962T	104" L x 34" W x 79" H	2	2000' of 2-1/2" Hose	\$1994.00
HC642T	72" L x 34" W x 79" H	2	1300' of 2-1/2" Hose	\$1576.00
HC963T	104" L x 34" W x 87" H	3	3000' of 2-1/2" Hose	\$2414.00
HC643T	72" L x 34" W x 87" H	3	2000' of 2-1/2" Hose	\$1838.00

Ready Rack® Cover Plate, 20" x 31"

Flat surface for holding bottle carriers or other items. Use with mobile hose cart.

Item #CP31 \$75.00

Leatherhead® Axes w/ Fiberglass Handle & Reflective Tape

This rugged axe is perfect for ventilation, forcible-entry or overhaul. The axe head is drop forged with high carbon steel and is bonded to the fiberglass handle with strong two part epoxy. Available with flat head or pick head.

- Hi-viz orange/ lime handle construction is solid hi-viz pultruded fiberglass with non-slip grip.
- Yellow handle construction is a strong pultruded fiberglass core with injection molded jacket for added strength.
- Made in the USA



Flat Head Axes

Item #	Description	Head	Length	
FA06	Hi-Viz Orange	6 lb.	36"	\$46.50
FAL6	Hi-Viz Lime	6 lb.	36"	\$46.50
FAY6	Yellow	6 lb.	36"	\$46.50
FA08	Hi-Viz Orange	8 lb.	36"	\$109.00
FAL8	Hi-Viz Lime	8 lb.	36"	\$109.00
FAY8	Yellow	8 lb.	36"	\$109.00

Pick Head Axes

Item #	Description	Head	Length	
PA06	Hi-Viz Orange	6 lb.	36"	\$52.50
PAL6	Hi-Viz Lime	6 lb.	36"	\$52.50
PAY6	Yellow	6 lb.	36"	\$52.50
PA08	Hi-Viz Orange	8 lb.	36"	\$109.00
PAL8	Hi-Viz Lime	8 lb.	36"	\$109.00
PAY8	Yellow	8 lb.	36"	\$109.00



Leatherhead® Bar, Forged Halligan Type

This rugged Leatherhead® bar is perfect for ventilation, forcible entry or overhaul. Drop forged with high carbon steel, fully treated and zinc plated. All forged design to last a lifetime. 100% manufactured in the USA with American materials and craftsmanship.



Leatherhead® Flat Head Axe & Halligan w/ HD Strap

Leatherhead® Tools offers the perfect married set of irons. This rugged flat head axe is perfect for ventilation, forcible entry and overhaul. Hi-viz lime axe handle construction is solid hi-viz pultruded fiberglass with non-slip grip. All forged one-piece Halligan bar out-performs inferior "multi-pieced" bars. Drop forged with 100% American high carbon steel. Hi-viz HD strap connects the set of irons for safe and easy carry.



Heavy Duty 5-In-1 Rescue Tool

Aggressive cross-hatch teeth twist and pull anything that gets in your way. Laser heat-treated cutting edges cut wires and cables easily. Pry-bar quickly pries open windows and doors. Slot for shutting off standard gas safety valves. Spanner wrench tightens and loosens hose couplings.

Item #LB24	24"	\$189.00
Item #LB30	30"	\$196.00
Item #LB36	36"	\$208.50

Item #KLB301 30" **\$245.15**

Item #88CH **\$49.00**